

Supplementary Materials

Comparative genomics of widespread and narrow-range white-bellied rats in the *Niviventer niviventer* species complex sheds light on invasive rodent success

Xin-Lai Wu^{1,2,6}, Dan-Ping Mu^{2,3}, Qi-Sen Yang², Yu Zhang², Yu-Chun Li⁴, Anderson Feijó², Ji-Long Cheng², Zhi-Xin Wen², Liang Lu⁵, Lin Xia², Zhi-Jun Zhou^{1,6,*}, Yan-Hua Qu^{2,*}, De-Yan Ge^{2,*}

¹Key Laboratory of Zoological Systematics and Application of Hebei Province, College of Life Sciences, Hebei University, Baoding, Hebei 071002, China

²Key Laboratory of Zoological Systematics and Evolution, Institute of Zoology, Chinese Academy of Sciences, Beichen West Road, Chaoyang District, Beijing 100101, China

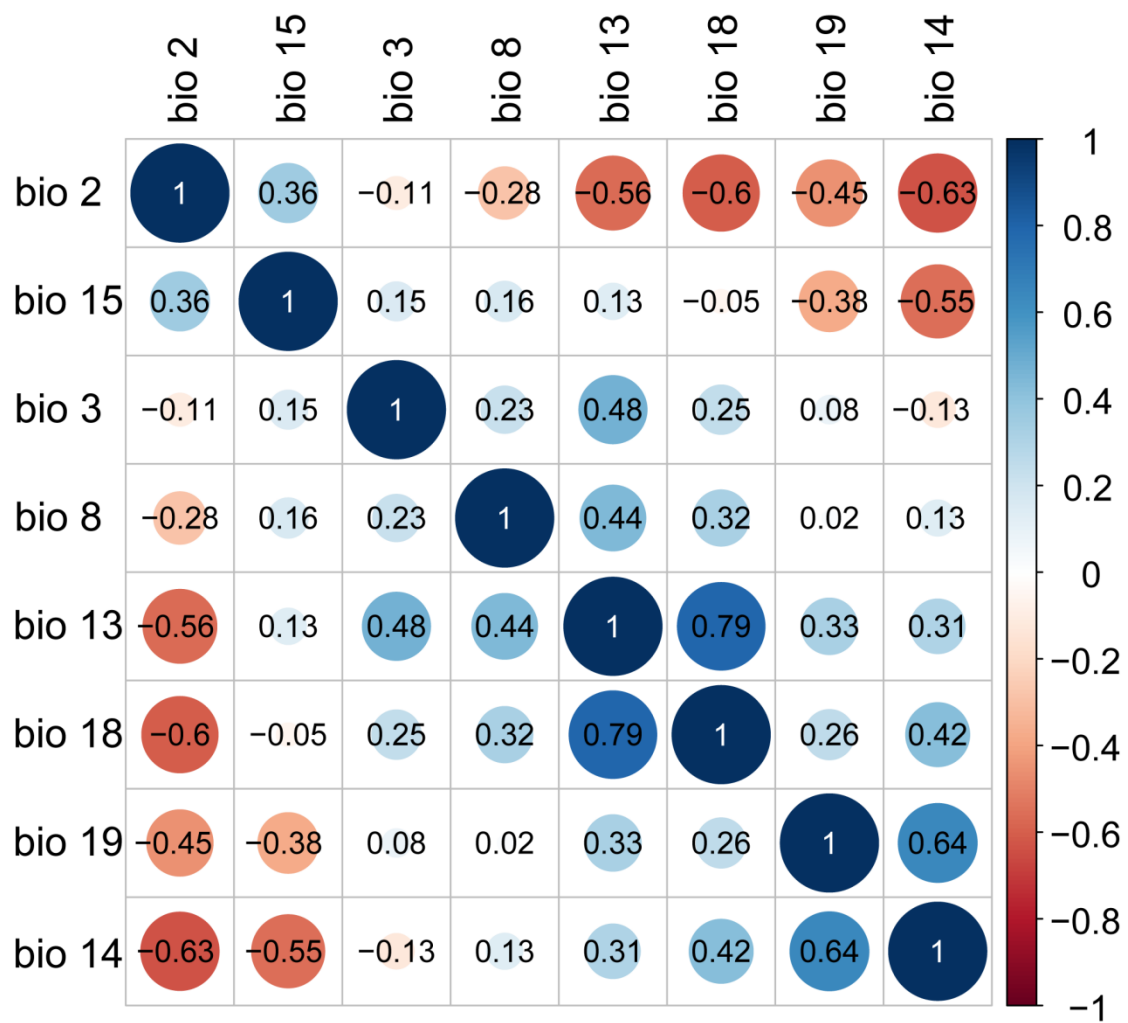
³Xinjiang Key Laboratory of Biological Resources and Genetic Engineering, College of Life Science and Technology, Xinjiang University, Urumqi, Xinjiang 830046, China

⁴Marine College, Shandong University, Weihai, Shandong 264209, China

⁵State Key Laboratory for Infectious Diseases Prevention and Control, National Institute for Communicable Disease Control and Prevention, Chinese Center for Disease Control and Prevention, Beijing 102206, China

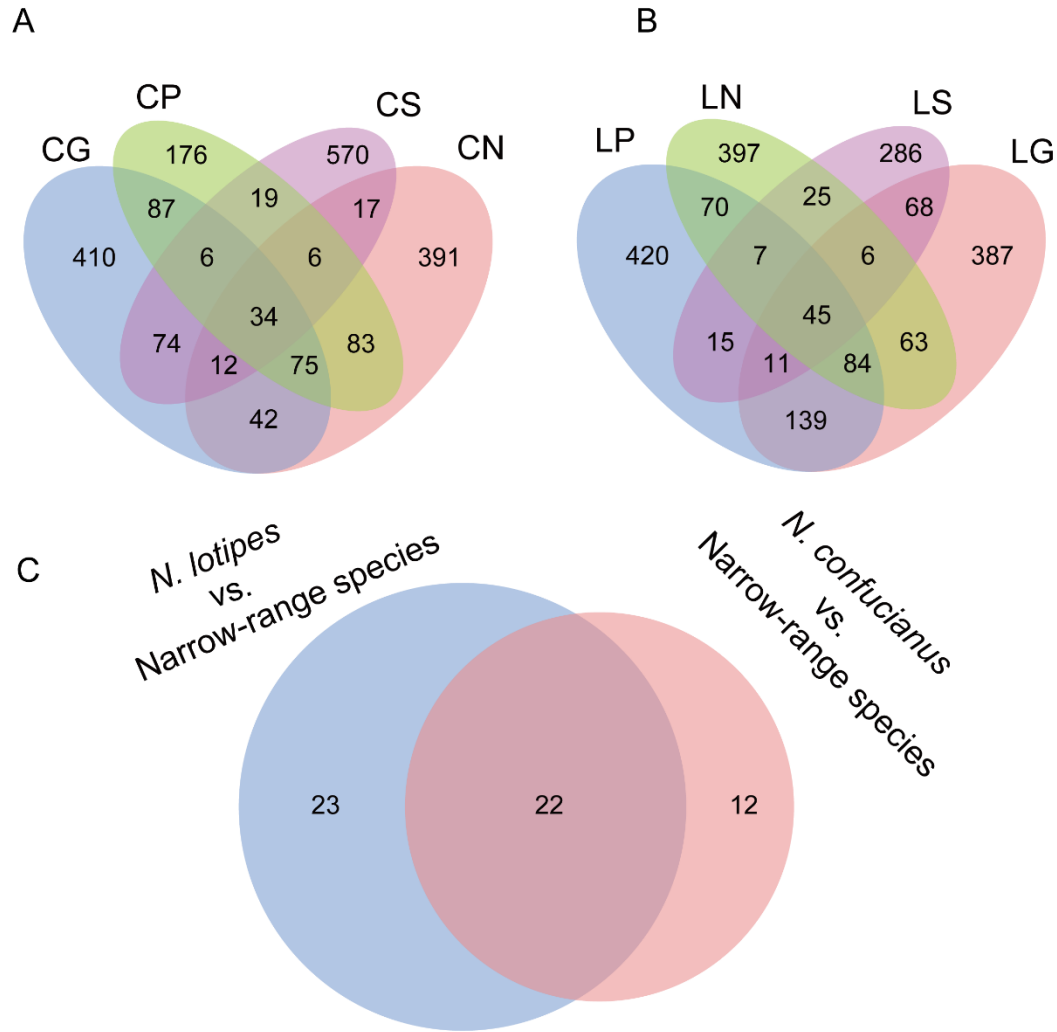
⁶Hebei Basic Science Center for Biotic Interaction, Institute of Life Science and Green Development, Hebei University, Baoding, Hebei 071002, China.

*Corresponding authors, E-mail: zhijunzhou@hbu.edu.cn; quyh@ioz.ac.cn; gedy@ioz.ac.cn



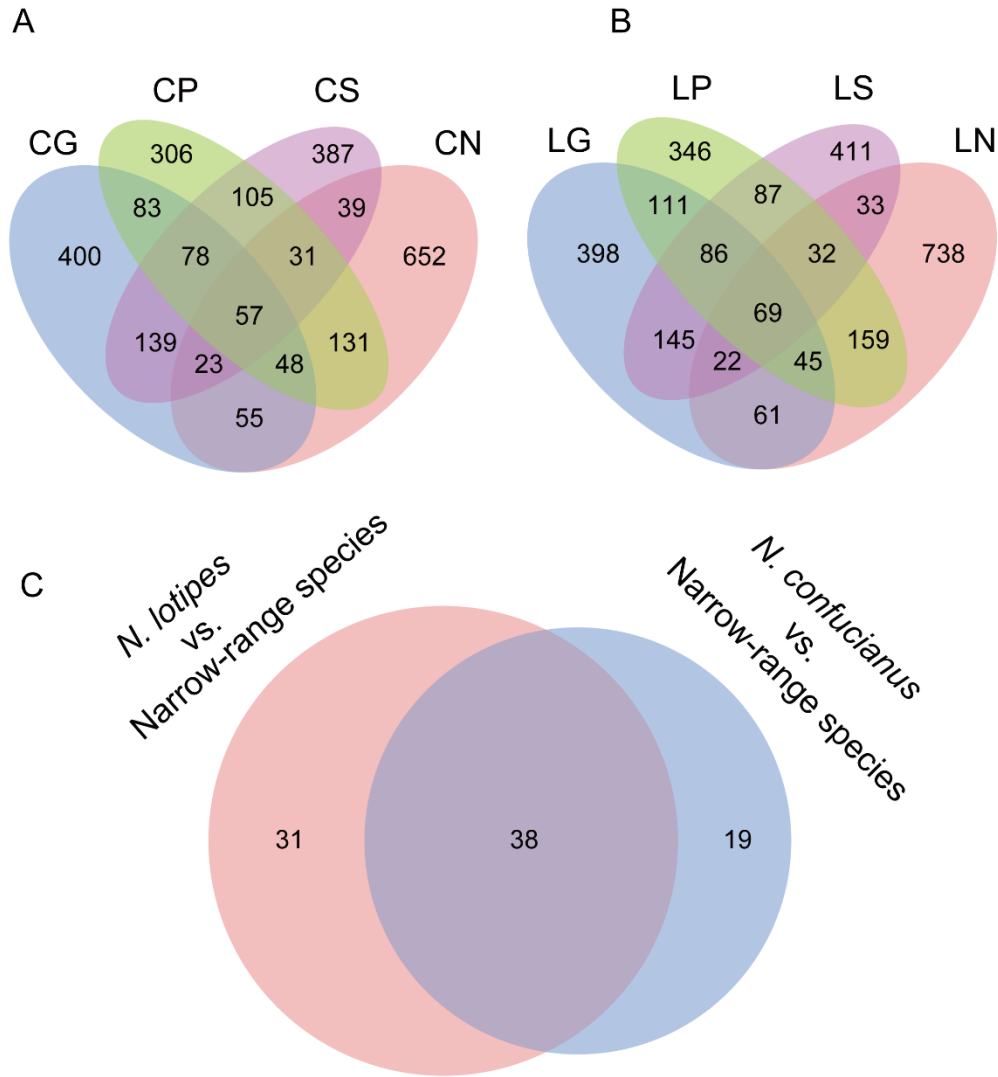
Supplementary Figure S1 Environmental factors used in ecological niche modeling

Number in circle represents Pearson coefficient between environmental factors. Bio 2, Mean diurnal range (mean of monthly differences between maximum and minimum temperature); bio 3, Isothermality (mean diurnal range/temperature annual range) ($\times 100$); bio 8, Mean temperature of wettest quarter; bio 13, Precipitation of wettest month; bio 14, Precipitation of driest month; bio 15, Precipitation seasonality (coefficient of variation); bio 18, Precipitation of warmest quarter; bio 19, Precipitation of coldest quarter.



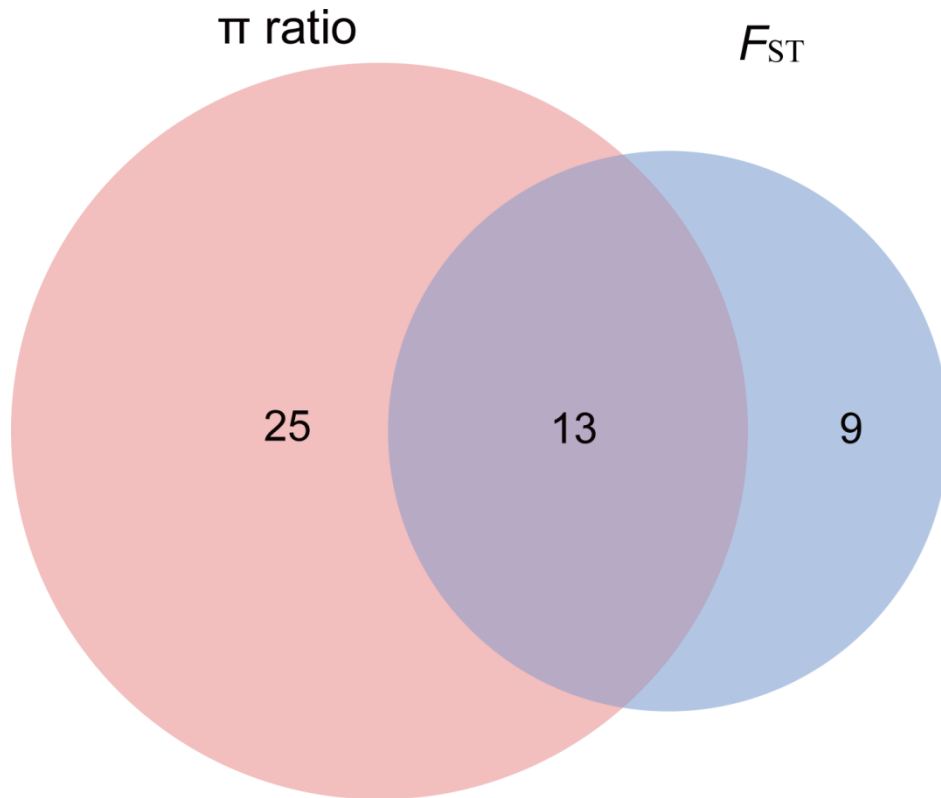
Supplementary Figure S2 Venn diagram of overlapping genes between widespread and narrow-range species by F_{ST} .

CG=*N. confucianus* vs. *N. gladiusmaculus*, CP=*N. confucianus* vs. *N. pianmaensis*, CS=*N. confucianus* vs. *N. sacer*, CN=*N. confucianus* vs. *N. niviventer*, LG=*N. lotipes* vs. *N. gladiusmaculus*, LP=*N. lotipes* vs. *N. pianmaensis*, LS=*N. lotipes* vs. *N. sacer*, LN=*N. lotipes* vs. *N. niviventer*. A: Venn diagram of overlapping genes for *N. confucianus* compared with four narrow-range species. B: Venn diagram of overlapping genes for *N. lotipes* compared with four narrow-range species. C: Venn diagram of overlapping genes for widespread species compared with four narrow-range species.

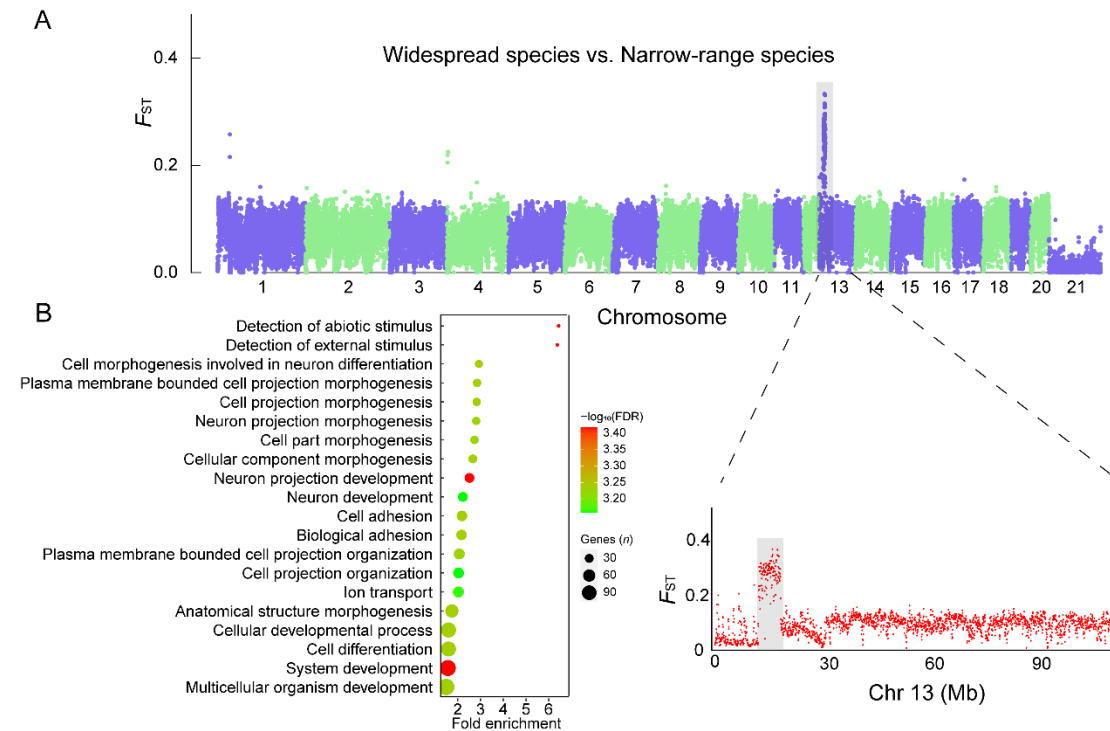


Supplementary Figure S3 Venn diagram of overlapping genes between widespread and narrow-range species by π ratio

A: Venn diagram of overlapping genes for *N. confucianus* compared with four narrow-range species. B: Venn diagram of overlapping genes for *N. lotipes* compared with four narrow-range species. C: Venn diagram of overlapping genes for widespread species compared with four narrow-range species.



Supplementary Figure S4 Overlapping genes between widespread and narrow-range species detected by two different methods



Supplementary Figure S5 Highly differentiated regions between widespread (two species) and narrow-range species (four species) and functional enrichment analysis

A: Highly differentiated regions between widespread and narrow-range species by F_{ST} . B: GO enrichment analyses of highly differentiated genes between widespread and narrow-range species.

Supplementary Table S1. 19 climatic variables used for ecological niche modelling.

Climatic variables	Definition
BIO1	Annual mean temperature
BIO2	Mean diurnal range (mean of the monthly differences between maximum and minimum temperature)
BIO3	Isothermality (mean diurnal range/temperature annual range) (*100)
BIO4	Temperature seasonality (standard deviation *100)
BIO5	Max temperature of the warmest month
BIO6	Min temperature of the coldest month
BIO7	Temperature annual range (BIO5-BIO6)
BIO8	Mean temperature of the wettest quarter
BIO9	Mean temperature of the driest quarter
BIO10	Mean temperature of the warmest quarter
BIO11	Mean temperature of the coldest quarter
BIO12	Annual precipitation
BIO13	Precipitation of the wettest month
BIO14	Precipitation of the driest month
BIO15	Precipitation seasonality (Coefficient of variation)
BIO16	Precipitation of the wettest quarter
BIO17	Precipitation of the driest quarter
BIO18	Precipitation of the warmest quarter
BIO19	Precipitation of the coldest quarter

Supplementary Table S2. Sample information used for ecological niche modelling.

Species	Lab	Collecting Locality	Longitude	Latitude	Altitude/m
<i>N. bukit</i>	IOZCAS	China: Yunnan, Xishuangbanna	99.90	22.60	
<i>N. bukit</i>	IOZCAS	Viet Nam: BiDup-NuiBaNP	108.40	12.10	1400
<i>N. bukit</i>	IOZCAS	Viet Nam: BiDup-NuiBaNP	108.40	12.10	1400
<i>N. bukit</i>	IOZCAS	Viet Nam: BiDup-NuiBaNP	108.66	12.16	1400
<i>N. bukit</i>	IOZCAS	Viet Nam: BiDup-NuiBaNP	108.40	12.10	1400
<i>N. bukit</i>	IOZCAS	Viet Nam: BiDup-NuiBaNP	108.66	12.16	1400
<i>N. bukit</i>	IOZCAS	Viet Nam: BiDup-NuiBaNP	108.66	12.16	1400
<i>N. bukit</i>	IOZCAS	Viet Nam: BiDup-NuiBaNP	108.66	12.16	1400
<i>N. bukit</i>	IOZCAS	Viet Nam: BiDup-NuiBaNP	108.66	12.16	1400
<i>N. bukit</i>	IOZCAS	Viet Nam: BiDup-NuiBaNP	108.66	12.16	1400
<i>N. bukit</i>	IOZCAS	Viet Nam: BiDup-NuiBaNP	108.66	12.16	1400
<i>N. bukit</i>	IOZCAS	Viet Nam: BiDup-NuiBaNP	108.66	12.16	1400
<i>N. bukit</i>	IOZCAS	Viet Nam: BiDup-NuiBaNP	108.66	12.16	1400
<i>N. bukit</i>	IOZCAS	Viet Nam: BiDup-NuiBaNP	108.66	12.16	1400
<i>N. bukit</i>	IOZCAS	Viet Nam: BiDup-NuiBaNP	108.66	12.16	1400
<i>N. bukit</i>	IOZCAS	Viet Nam: BiDup-NuiBaNP	108.66	12.16	1400
<i>N. bukit</i>	IOZCAS	Viet Nam: BiDup-NuiBaNP	108.40	12.10	1400
<i>N. bukit</i>	IOZCAS	Viet Nam: BiDup-NuiBaNP	108.40	12.10	1400
<i>N. bukit</i>	IOZCAS	China: Yunnan, Xishuangbanna	99.90	22.60	
<i>N. bukit</i>	IOZCAS	Viet Nam: NamCatTienNP	107.40	11.43	100
<i>N. bukit</i>	IOZCAS	Viet Nam: NamCatTienNP	107.40	11.43	100
<i>N. bukit</i>	IOZCAS	Viet Nam: NamCatTienNP	107.40	11.43	100
<i>N. bukit</i>	IOZCAS	Viet Nam: NamCatTienNP	107.40	11.43	100
<i>N. bukit</i>	IOZCAS	Viet Nam: NamCatTienNP	107.40	11.43	100
<i>N. bukit</i>	IOZCAS	Viet Nam: NamCatTienNP	107.40	11.43	100
<i>N. bukit</i>	IOZCAS	Viet Nam: NamCatTienNP	107.40	11.43	100
<i>N. bukit</i>	IOZCAS	Viet Nam: NamCatTienNP	107.40	11.43	100
<i>N. bukit</i>	IOZCAS	Viet Nam: NamCatTienNP	107.40	11.43	100
<i>N. bukit</i>	IOZCAS	Viet Nam: NamCatTienNP	107.40	11.43	100
<i>N. bukit</i>	IOZCAS	Viet Nam: NamCatTienNP	107.40	11.43	100
<i>N. bukit</i>	IOZCAS	Viet Nam: NamCatTienNP	107.40	11.43	100
<i>N. bukit</i>	IOZCAS	Viet Nam: NamCatTienNP	107.40	11.43	100
<i>N. bukit</i>	IOZCAS	Viet Nam: NamCatTienNP	107.40	11.43	100
<i>N. bukit</i>	IOZCAS	Chia: Yunnan, Menghai	100.50	21.95	
<i>N. bukit</i>	IOZCAS	Viet Nam: Dien Bien, Muong Nhe	103.00	21.38	800
<i>N. bukit</i>	IOZCAS	Viet Nam: BiDup-NuiBaNP	108.66	12.16	1400
<i>N. bukit</i>	IOZCAS	Viet Nam: BiDup-NuiBaNP	108.66	12.16	1400
<i>N. bukit</i>	IOZCAS	Viet Nam: BiDup-NuiBaNP	108.66	12.16	1400
<i>N. bukit</i>	IOZCAS	Viet Nam: BiDup-NuiBaNP	108.66	12.16	1400

Species	Lab	Collecting Locality	Longitude	Latitude	Altitude/m
<i>N. bukit</i>	IOZCAS	Viet Nam: Lam Dong, Bidup	108.40	12.10	1400
<i>N. bukit</i>	IOZCAS	Viet Nam: Lao Cai, Sapa	104.00	22.33	1900-1950
<i>N. bukit</i>	IOZCAS	Viet Nam: Lam Dong, Bidup	108.40	12.10	1400
<i>N. bukit</i>	IOZCAS	Viet Nam: Lam Dong, Bidup	108.40	12.10	1400
<i>N. confucianus</i>	IOZCAS	China: Shaanxi, Ningqiang, Qinglin Mountain	107.00	34.00	
<i>N. confucianus</i>	IOZCAS	China: Shaanxi, Ningqiang, Qinglin Mountain	107.00	34.00	
<i>N. confucianus</i>	IOZCAS	China: Yunnan, Jingdong, Ailao Mountain	101.01	24.53	
<i>N. confucianus</i>	IOZCAS	China: Yunnan, Jingdong, Ailao Mountain	101.01	24.53	
<i>N. confucianus</i>	IOZCAS	China: Beijing, Mentougou	115.45	39.60	
<i>N. confucianus</i>	IOZCAS	China: Yunnan, Yongde	99.25	24.03	
<i>N. confucianus</i>	IOZCAS	China: Shaanxi, Ningshan	108.33	33.34	
<i>N. confucianus</i>	IOZCAS	China: Shaanxi, Ningshan	108.33	33.34	
<i>N. confucianus</i>	IOZCAS	China: Yunnan, Dongchuan	103.18	26.08	
<i>N. confucianus</i>	IOZCAS	China: Yunnan, Lvchun	102.42	23.01	
<i>N. confucianus</i>	IOZCAS	China: Sichuan, Baoxing	102.80	30.38	
<i>N. confucianus</i>	IOZCAS	China: Sichuan, Baoxing	102.80	30.38	
<i>N. confucianus</i>	IOZCAS	China: Sichuan, Baoxing	102.80	30.38	
<i>N. confucianus</i>	IOZCAS	China: Sichuan, Shimian	102.38	29.21	
<i>N. confucianus</i>	IOZCAS	China: Yunnan, Zhaotong	103.67	27.25	
<i>N. confucianus</i>	IOZCAS	China: Qinghai, Yushu	96.60	33.20	
<i>N. confucianus</i>	IOZCAS	China: Qinghai, Yushu	96.60	33.20	
<i>N. confucianus</i>	IOZCAS	China: Qinghai, Xunhua	102.46	35.84	
<i>N. confucianus</i>	IOZCAS	China: Tibet, Chayu	96.96	28.55	3938
<i>N. confucianus</i>	IOZCAS	China: Tibet, Chayu	96.96	28.55	3938
<i>N. confucianus</i>	IOZCAS	China: Tibet, Chayu	96.96	28.55	3938
<i>N. confucianus</i>	IOZCAS	China: Tibet, Jiangda	98.26	32.53	3468
<i>N. confucianus</i>	IOZCAS	China: Yunnan, Deqin, Baimang Snow Mountain	99.37	27.63	3100
<i>N. confucianus</i>	IOZCAS	China: Sichuan, Puge, Luoji Mountain	102.20	27.40	3000
<i>N. confucianus</i>	IOZCAS	China: Sichuan, Puge, Luoji Mountain	102.20	27.40	3400
<i>N. confucianus</i>	IOZCAS	China: Sichuan, Puge, Luoji Mountain	102.20	27.40	3400
<i>N. confucianus</i>	IOZCAS	China: Sichuan, Puge, Luoji Mountain	102.20	27.40	3400

[illegible]

Species	Lab	Collecting Locality	Longitude	Latitude	Altitude/m
<i>N. confucianus</i>	IOZCAS	China: Sichuan, Puge, Luoji Mountain	102.20	27.40	2600
<i>N. confucianus</i>	IOZCAS	China: Sichuan, Puge, Luoji Mountain	102.20	27.40	2600
<i>N. confucianus</i>	IOZCAS	China: Sichuan, Puge, Luoji Mountain	102.20	27.40	2600
<i>N. confucianus</i>	IOZCAS	China: Sichuan, Puge, Luoji Mountain	102.20	27.40	2600
<i>N. confucianus</i>	IOZCAS	China: Sichuan, Puge, Luoji Mountain	102.20	27.40	2600
<i>N. confucianus</i>	IOZCAS	China: Sichuan, Puge, Luoji Mountain	102.20	27.40	2600
<i>N. confucianus</i>	IOZCAS	China: Sichuan, Puge, Luoji Mountain	102.20	27.40	2600
<i>N. confucianus</i>	IOZCAS	China: Sichuan, Puge, Luoji Mountain	102.20	27.40	2600
<i>N. confucianus</i>	IOZCAS	China: Sichuan, Puge, Luoji Mountain	102.20	27.40	2600
<i>N. confucianus</i>	IOZCAS	China: Sichuan, Puge, Luoji Mountain	102.20	27.40	2600
<i>N. confucianus</i>	IOZCAS	China: Sichuan, Puge, Luoji Mountain	102.20	27.40	2600
<i>N. confucianus</i>	IOZCAS	China: Sichuan, Puge, Luoji Mountain	102.20	27.40	2600
<i>N. confucianus</i>	IOZCAS	China: Sichuan, Jiajin Mountain	102.42	30.33	
<i>N. confucianus</i>	IOZCAS	China: Hubei, Shengnongjia	110.68	31.74	
<i>N. confucianus</i>	IOZCAS	China: Hubei, Shengnongjia	110.68	31.74	
<i>N. confucianus</i>	IOZCAS	China: Sichuan, Rangtang	100.98	32.27	
<i>N. confucianus</i>	IOZCAS	China: Sichuan, Rangtang	100.98	32.27	
<i>N. confucianus</i>	IOZCAS	China: Sichuan, Luding, Gongga Mountain	101.50	29.50	3200
<i>N. confucianus</i>	IOZCAS	China: Sichuan, Luding, Gongga Mountain	101.50	29.50	3200
<i>N. confucianus</i>	IOZCAS	China: Sichuan, Luding, Gongga Mountain	101.50	29.50	3200
<i>N. confucianus</i>	IOZCAS	China: Sichuan, Luding, Gongga Mountain	101.50	29.50	3200
<i>N. confucianus</i>	IOZCAS	China: Sichuan, Luding, Gongga Mountain	101.50	29.50	3200
<i>N. confucianus</i>	IOZCAS	China: Sichuan, Luding, Gongga Mountain	101.50	29.50	3200
<i>N. confucianus</i>	IOZCAS	China: Sichuan, Luding, Gongga Mountain	101.50	29.50	3200
<i>N. confucianus</i>	IOZCAS	China: Tibet, Chawalong	98.20	28.46	

Species	Lab	Collecting Locality	Longitude	Latitude	Altitude e/m
<i>N. confucianus</i>	IOZCAS	China: Tibet, Chawalong	98.20	28.46	
<i>N. confucianus</i>	IOZCAS	China: Sichuan, Jiulong Shanyanlong	101.25	28.74	
<i>N. confucianus</i>	IOZCAS	China: Sichuan, Jiulong Shanyanlong	101.25	28.74	
<i>N. confucianus</i>	IOZCAS	China: Sichuan, Jiulong Shanyanlong	101.25	28.74	
<i>N. confucianus</i>	IOZCAS	China: Sichuan, Jiulong Shanyanlong	101.25	28.74	
<i>N. confucianus</i>	IOZCAS	China: Sichuan, Jiulong Shanyanlong	101.25	28.74	
<i>N. confucianus</i>	IOZCAS	China: Sichuan, Kangding	102.03	32.05	
<i>N. confucianus</i>	IOZCAS	China: Sichuan, Erlang Mountain	102.33	29.97	
<i>N. confucianus</i>	IOZCAS	China: Sichuan, Erlang Mountain	102.33	29.97	
<i>N. confucianus</i>	IOZCAS	China: Sichuan, Erlang Mountain	102.33	29.97	
<i>N. confucianus</i>	IOZCAS	China: Sichuan, Decha, Yajiang	101.02	30.03	
<i>N. confucianus</i>	IOZCAS	China: Sichuan, Decha, Yajiang	101.02	30.03	
<i>N. confucianus</i>	IOZCAS	China: Sichuan, Mianzhu	104.19	31.34	
<i>N. confucianus</i>	IOZCAS	China: Sichuan, Tianquan	102.83	30.07	
<i>N. confucianus</i>	IOZCAS	China: Sichuan, Tianquan	102.83	30.07	
<i>N. confucianus</i>	IOZCAS	China: Sichuan, Qingchuan	105.23	32.58	
<i>N. confucianus</i>	IOZCAS	China: Sichuan, Daocheng	100.50	29.00	
<i>N. confucianus</i>	IOZCAS	China: Sichuan, Qingchuan	105.23	32.58	
<i>N. confucianus</i>	IOZCAS	China: Sichuan, Erlang Mountain	102.33	29.97	
<i>N. confucianus</i>	IOZCAS	China: Sichuan, Erlang Mountain	102.33	29.97	
<i>N. confucianus</i>	IOZCAS	China: Sichuan, Erlang Mountain	102.33	29.97	
<i>N. confucianus</i>	IOZCAS	China: Sichuan, Tianquan	102.83	30.07	
<i>N. confucianus</i>	IOZCAS	China: Sichuan, Mianzhu	104.19	31.34	
<i>N. confucianus</i>	IOZCAS	China: Sichuan, Wenchuan	103.40	31.00	
<i>N. confucianus</i>	IOZCAS	China: Sichuan, Wenchuan	103.40	31.00	
<i>N. confucianus</i>	IOZCAS	China: Sichuan, Erlang Mountain	102.33	29.97	
<i>N. confucianus</i>	IOZCAS	China: Sichuan, Cuopu, Batang	99.00	30.00	
<i>N. confucianus</i>	IOZCAS	China: Sichuan, Decha, Yajiang	101.02	30.03	
<i>N. confucianus</i>	IOZCAS	China: Sichuan, Luding, Gongga Mountain	101.50	29.50	1600

[illegible]

Species	Lab	Collecting Locality	Longitude	Latitude	Altitude/m
<i>N. confucianus</i>	IOZCAS	China: Sichuan, Luding, Gongga Mountain	101.50	29.50	1600
<i>N. confucianus</i>	IOZCAS	China: Sichuan, Luding, Gongga Mountain	101.50	29.50	1600
<i>N. confucianus</i>	IOZCAS	China: Sichuan, Luding, Gongga Mountain	101.50	29.50	1600
<i>N. confucianus</i>	IOZCAS	China: Sichuan, Luding, Gongga Mountain	101.50	29.50	1600
<i>N. confucianus</i>	IOZCAS	China: Sichuan, Luding, Gongga Mountain	101.50	29.50	1600
<i>N. confucianus</i>	IOZCAS	China: Sichuan, Luding, Gongga Mountain	101.50	29.50	1600
<i>N. confucianus</i>	IOZCAS	China: Sichuan, Luding, Gongga Mountain	101.50	29.50	1600
<i>N. confucianus</i>	IOZCAS	China: Sichuan, Luding, Gongga Mountain	101.50	29.50	1600
<i>N. confucianus</i>	IOZCAS	China: Sichuan, Luding, Gongga Mountain	101.50	29.50	1600
<i>N. confucianus</i>	IOZCAS	China: Sichuan, Luding, Gongga Mountain	101.50	29.50	1600
<i>N. confucianus</i>	IOZCAS	China: Sichuan, Luding, Gongga Mountain	101.50	29.50	1600
<i>N. confucianus</i>	IOZCAS	China: Sichuan, Luding, Gongga Mountain	101.50	29.50	1600
<i>N. confucianus</i>	IOZCAS	China: Sichuan, Luding, Gongga Mountain	101.50	29.50	1600
<i>N. confucianus</i>	IOZCAS	China: Sichuan, Luding, Gongga Mountain	101.50	29.50	1600
<i>N. confucianus</i>	IOZCAS	China: Sichuan, Luding, Gongga Mountain	101.50	29.50	1600
<i>N. confucianus</i>	IOZCAS	China: Sichuan, Luding, Gongga Mountain	101.50	29.50	1600
<i>N. confucianus</i>	IOZCAS	China: Sichuan, Jiulong Wanba	101.25	28.74	
<i>N. confucianus</i>	IOZCAS	China: Sichuan, Jiulong Wanba	101.25	28.74	
<i>N. confucianus</i>	IOZCAS	China: Sichuan, Decha, Yajiang	101.02	30.03	
<i>N. confucianus</i>	IOZCAS	China: Sichuan, Decha, Yajiang	101.02	30.03	
<i>N. confucianus</i>	IOZCAS	China: Sichuan, Baoxing	102.80	30.38	
<i>N. confucianus</i>	IOZCAS	China: Sichuan, Luding, Gongga Mountain	101.50	29.50	
<i>N. confucianus</i>	IOZCAS	China: Beijing, Fangshan	116.13	39.75	800
<i>N. confucianus</i>	IOZCAS	China: Sichuan, Heishuihe	103.48	30.68	
<i>N. confucianus</i>	IOZCAS	China: Sichuan, Heishuihe	103.48	30.68	
<i>N. confucianus</i>	IOZCAS	China: Sichuan, Heishuihe	103.48	30.68	
<i>N. confucianus</i>	IOZCAS	China: Sichuan, Heishuihe	103.48	30.68	

Species	Lab	Collecting Locality	Longitude	Latitude	Altitude/m
<i>N. confucianus</i>	IOZCAS	China: Sichuan, Puge, Luoji Mountain	102.20	27.40	3800
<i>N. confucianus</i>	IOZCAS	China: Sichuan, Puge, Luoji Mountain	102.20	27.40	3800
<i>N. confucianus</i>	IOZCAS	China: Gansi, Baishuijiang, Qiujiaba	104.30	32.90	2300
<i>N. confucianus</i>	IOZCAS	China: Gansi, Baishuijiang, Qiujiaba	104.30	32.90	2300
<i>N. confucianus</i>	IOZCAS	China: Gansi, Baishuijiang, Qiujiaba	104.30	32.90	2300
<i>N. confucianus</i>	IOZCAS	China: Gansi, Baishuijiang, Qiujiaba	104.30	32.90	2300
<i>N. confucianus</i>	IOZCAS	China: Gansi, Baishuijiang, Qiujiaba	104.30	32.90	2300
<i>N. confucianus</i>	IOZCAS	China: Gansi, Baishuijiang, Qiujiaba	104.30	32.90	2300
<i>N. confucianus</i>	IOZCAS	China: Gansi, Baishuijiang, Qiujiaba	104.30	32.90	2300
<i>N. confucianus</i>	IOZCAS	China: Gansi, Baishuijiang, Qiujiaba	104.30	32.90	2170
<i>N. confucianus</i>	IOZCAS	China: Gansu, Xigou, Yangnaishan	104.30	32.90	2000
<i>N. confucianus</i>	IOZCAS	China: Gansu, Xigou, Yangnaishan	104.30	32.90	2000
<i>N. confucianus</i>	IOZCAS	China: Gansu, Xigou, Yangnaishan	104.30	32.90	2000
<i>N. confucianus</i>	IOZCAS	China: Gansu, Xigou, Yangnaishan	104.30	32.90	2000
<i>N. confucianus</i>	IOZCAS	China: Gansu, Xigou, Yangnaishan	104.30	32.90	2000
<i>N. confucianus</i>	IOZCAS	China: Gansu, Xigou, Yangnaishan	104.30	32.90	2000
<i>N. confucianus</i>	IOZCAS	China: Gansu, Xigou, Yangnaishan	104.30	32.90	2000
<i>N. confucianus</i>	IOZCAS	China: Gansu, Xigou, Yangnaishan	104.30	32.90	2000
<i>N. confucianus</i>	IOZCAS	China: Gansu, Xigou, Yangnaishan	104.30	32.90	2000
<i>N. confucianus</i>	IOZCAS	China: Gansu, Xigou, Yangnaishan	104.30	32.90	2000
<i>N. confucianus</i>	IOZCAS	China: Gansu, Xigou, Yangnaishan	104.30	32.90	2000
<i>N. confucianus</i>	IOZCAS	China: Gansu, Xigou, Yangnaishan	104.30	32.90	2000
<i>N. confucianus</i>	IOZCAS	China: Gansu, Zhouqu, Wudu	104.30	32.90	2000
<i>N. confucianus</i>	IOZCAS	China: Guizhou, Weining	104.23	26.85	2320
<i>N. confucianus</i>	IOZCAS	China: Guizhou, Zhunyi	106.90	27.70	1800
<i>N. confucianus</i>	IOZCAS	China: Guizhou, Zhunyi	106.90	27.70	1800

[illegible]

Species	Lab	Collecting Locality	Longitude	Latitude	Altitude/m
<i>N. confucianus</i>	IOZCAS	China: Sichuan, Luding, Gongga Mountain	101.50	29.50	2800
<i>N. confucianus</i>	IOZCAS	China: Hubei, Badong	110.40	31.00	400
<i>N. confucianus</i>	IOZCAS	China: Hubei, Huangpo	114.38	30.88	
<i>N. confucianus</i>	IOZCAS	China: Hubei, Huangpo	114.38	30.88	
<i>N. confucianus</i>	IOZCAS	China: Hebei, Shijiazhuang, Lingshoushan	114.37	38.03	400
<i>N. confucianus</i>	IOZCAS	China: Hebei, Shijiazhuang, Lingshoushan	114.37	38.03	400
<i>N. confucianus</i>	IOZCAS	China: Hubei, Xingshan, Longmenhe	110.50	31.56	1300
<i>N. confucianus</i>	IOZCAS	China: Hubei, Xingshan, Longmenhe	110.50	31.56	1300
<i>N. confucianus</i>	IOZCAS	China: Hubei, Xingshan, Longmenhe	110.50	31.56	1300
<i>N. confucianus</i>	IOZCAS	China: Hubei, Xingshan, Longmenhe	110.50	31.56	1300
<i>N. confucianus</i>	IOZCAS	China: Sichuan, Qingchuan, Tangjiahe	104.74	32.60	2200
<i>N. confucianus</i>	IOZCAS	China: Sichuan, Qingchuan, Tangjiahe	104.74	32.60	2200
<i>N. confucianus</i>	IOZCAS	China: Sichuan, Qingchuan, Tangjiahe	104.74	32.60	2200
<i>N. confucianus</i>	IOZCAS	China: Sichuan, Qingchuan, Tangjiahe	104.74	32.60	2200
<i>N. confucianus</i>	IOZCAS	China: Sichuan, Qingchuan, Tangjiahe	104.74	32.60	2200
<i>N. confucianus</i>	IOZCAS	China: Sichuan, Qingchuan, Tangjiahe	104.74	32.60	2200
<i>N. confucianus</i>	IOZCAS	China: Hunan, Xinhua	112.00	34.00	440
<i>N. confucianus</i>	IOZCAS	China: Henan, Linzhou	104.30	36.00	440
<i>N. confucianus</i>	IOZCAS	China: Henan, Linzhou	104.30	36.00	440
<i>N. confucianus</i>	IOZCAS	China: Henan, Linzhou	104.30	36.00	440
<i>N. confucianus</i>	IOZCAS	China: Henan, Linzhou	104.30	36.00	440
<i>N. confucianus</i>	IOZCAS	China: Yunnan, Ninglang	100.82	27.29	
<i>N. confucianus</i>	IOZCAS	China: Henan, Luoyang, Luonan	111.29	27.73	1000
<i>N. confucianus</i>	IOZCAS	China: Sichuan, Qingchuan, Tangjiahe	104.74	32.60	1500

Species	Lab	Collecting Locality	Longitude	Latitude	Altitude/m
<i>N. confucianus</i>	IOZCAS	China: Sichuan, Qingchuan, Tangjiahe	104.74	32.60	1500
<i>N. confucianus</i>	IOZCAS	China: Sichuan, Qingchuan, Tangjiahe	104.74	32.60	1500
<i>N. confucianus</i>	IOZCAS	China: Sichuan, Qingchuan, Tangjiahe	104.74	32.60	1500
<i>N. confucianus</i>	IOZCAS	China: Sichuan, Qingchuan, Tangjiahe	104.74	32.60	1500
<i>N. confucianus</i>	IOZCAS	China: Sichuan, Qingchuan, Tangjiahe	104.74	32.60	1500
<i>N. confucianus</i>	IOZCAS	China: Sichuan, Qingchuan, Tangjiahe	104.74	32.60	1500
<i>N. confucianus</i>	IOZCAS	China: Sichuan, Qingchuan, Tangjiahe	104.74	32.60	1500
<i>N. confucianus</i>	IOZCAS	China: Sichuan, Qingchuan, Tangjiahe	104.74	32.60	1500
<i>N. confucianus</i>	IOZCAS	China: Sichuan, Qingchuan, Tangjiahe	104.74	32.60	1500
<i>N. confucianus</i>	IOZCAS	China: Sichuan, Qingchuan, Tangjiahe	104.74	32.60	1500
<i>N. confucianus</i>	IOZCAS	China: Sichuan, Qingchuan, Tangjiahe	104.74	32.60	1500
<i>N. confucianus</i>	IOZCAS	China: Sichuan, Qingchuan, Tangjiahe	104.74	32.60	1850
<i>N. confucianus</i>	IOZCAS	China: Sichuan, Qingchuan, Tangjiahe	104.74	32.60	1850
<i>N. confucianus</i>	IOZCAS	China: Sichuan, Qingchuan, Tangjiahe	104.74	32.60	1500
<i>N. confucianus</i>	IOZCAS	China: Sichuan, Qingchuan, Tangjiahe	104.74	32.60	1850
<i>N. confucianus</i>	IOZCAS	China: Sichuan, Qingchuan, Tangjiahe	104.74	32.60	1500
<i>N. confucianus</i>	IOZCAS	China: Sichuan, Qingchuan, Tangjiahe	104.74	32.60	1500
<i>N. confucianus</i>	IOZCAS	China: Sichuan, Qingchuan, Tangjiahe	104.74	32.60	1850
<i>N. confucianus</i>	IOZCAS	China: Sichuan, Qingchuan, Tangjiahe	104.74	32.60	1500
<i>N. confucianus</i>	IOZCAS	China: Sichuan, Qingchuan, Tangjiahe	104.74	32.60	1850
<i>N. confucianus</i>	IOZCAS	China: Sichuan, Qingchuan, Tangjiahe	104.74	32.60	1150

[illegible]

Species	Lab	Collecting Locality	Longitude	Latitude	Altitude e/m
<i>N. confucianus</i>	IOZCAS	China: Sichuan, Puge, Luoji Mountain	102.20	27.40	3000
<i>N. confucianus</i>	IOZCAS	China: Sichuan, Puge, Luoji Mountain	102.20	27.40	3000
<i>N. confucianus</i>	IOZCAS	China: Sichuan, Puge, Luoji Mountain	102.20	27.40	3000
<i>N. confucianus</i>	IOZCAS	China: Sichuan, Puge, Luoji Mountain	102.20	27.40	3000
<i>N. confucianus</i>	IOZCAS	China: Sichuan, Puge, Luoji Mountain	102.20	27.40	3000
<i>N. confucianus</i>	IOZCAS	China: Sichuan, Puge, Luoji Mountain	102.20	27.40	3000
<i>N. confucianus</i>	IOZCAS	China: Sichuan, Puge, Luoji Mountain	102.20	27.40	3000
<i>N. confucianus</i>	IOZCAS	China: Sichuan, Puge, Luoji Mountain	102.20	27.40	3000
<i>N. confucianus</i>	IOZCAS	China: Sichuan, Puge, Luoji Mountain	102.20	27.40	3000
<i>N. confucianus</i>	IOZCAS	China: Sichuan, Puge, Luoji Mountain	102.20	27.40	3000
<i>N. confucianus</i>	IOZCAS	China: Sichuan, Puge, Luoji Mountain	102.20	27.40	3000
<i>N. confucianus</i>	IOZCAS	China: Sichuan, Puge, Luoji Mountain	102.20	27.40	3000
<i>N. confucianus</i>	IOZCAS	China: Sichuan, Puge, Luoji Mountain	102.20	27.40	3000
<i>N. confucianus</i>	IOZCAS	China: Sichuan, Puge, Luoji Mountain	102.20	27.40	3000
<i>N. confucianus</i>	IOZCAS	China: Sichuan, Puge, Luoji Mountain	102.20	27.40	3000
<i>N. confucianus</i>	IOZCAS	China: Sichuan, Puge, Luoji Mountain	102.20	27.40	3000
<i>N. confucianus</i>	IOZCAS	China: Sichuan, Puge, Luoji Mountain	102.20	27.40	3000
<i>N. confucianus</i>	IOZCAS	China: Sichuan, Puge, Luoji Mountain	102.20	27.40	3000
<i>N. confucianus</i>	IOZCAS	China: Sichuan, Luding, Gongga Mountain	101.50	29.50	1200
<i>N. confucianus</i>	IOZCAS	China: Sichuan, Luding, Gongga Mountain	101.50	29.50	1200

[illegible]

[illegible]

[illegible]

[illegible]

Species	Lab	Collecting Locality	Longitude	Latitude	Altitude/m
<i>N. confucianus</i>	IOZCAS	China: Hubei, Wuhan, Huangpo	114.50	31.00	200
<i>N. confucianus</i>	IOZCAS	China: Sichuan: Wenchuan, Wolong Nature Reserve	102.97	30.85	1930
<i>N. confucianus</i>	IOZCAS	China: Sichuan: Wenchuan, Wolong Nature Reserve	102.97	30.85	1930
<i>N. confucianus</i>	IOZCAS	China: Sichuan: Wenchuan, Wolong Nature Reserve	102.97	30.85	2800
<i>N. confucianus</i>	IOZCAS	China: Sichuan: Wenchuan, Wolong Nature Reserve	102.97	30.85	2800
<i>N. confucianus</i>	IOZCAS	China: Sichuan: Wenchuan, Wolong Nature Reserve	102.97	30.85	2800
<i>N. confucianus</i>	IOZCAS	China: Sichuan: Wenchuan, Wolong Nature Reserve	102.97	30.85	2800
<i>N. confucianus</i>	IOZCAS	China: Sichuan: Wenchuan, Wolong Nature Reserve	102.97	30.85	2800
<i>N. confucianus</i>	IOZCAS	China: Sichuan: Wenchuan, Wolong Nature Reserve	102.97	30.85	3003
<i>N. confucianus</i>	IOZCAS	China: Sichuan: Wenchuan, Wolong Nature Reserve	102.97	30.85	3003
<i>N. confucianus</i>	IOZCAS	China: Sichuan: Wenchuan, Wolong Nature Reserve	102.97	30.85	2800
<i>N. confucianus</i>	IOZCAS	China: Sichuan: Wenchuan, Wolong Nature Reserve	102.97	30.85	2800
<i>N. confucianus</i>	IOZCAS	China: Sichuan: Wenchuan, Wolong Nature Reserve	102.97	30.85	3003
<i>N. confucianus</i>	IOZCAS	China: Sichuan: Wenchuan, Wolong Nature Reserve	102.97	30.85	2500
<i>N. confucianus</i>	IOZCAS	China: Sichuan: Wenchuan, Wolong Nature Reserve	102.97	30.85	2500
<i>N. confucianus</i>	IOZCAS	China: Sichuan: Wenchuan, Wolong Nature Reserve	102.97	30.85	1800
<i>N. confucianus</i>	IOZCAS	China: Sichuan: Wenchuan, Wolong Nature Reserve	102.97	30.85	1800
<i>N. confucianus</i>	IOZCAS	China: Sichuan: Wenchuan, Wolong Nature Reserve	102.97	30.85	2200
<i>N. confucianus</i>	IOZCAS	China: Sichuan: Wenchuan, Wolong Nature Reserve	102.97	30.85	2200
<i>N. confucianus</i>	IOZCAS	China: Sichuan: Wenchuan, Wolong Nature Reserve	102.97	30.85	2200
<i>N. confucianus</i>	IOZCAS	China: Sichuan: Wenchuan, Wolong Nature Reserve	102.97	30.85	1550
<i>N. confucianus</i>	IOZCAS	China: Sichuan: Wenchuan, Wolong Nature Reserve	102.97	30.85	1550

[illegible]

[illegible]

[illegible]

Species	Lab	Collecting Locality	Longitude	Latitude	Altitude/m
<i>N. confucianus</i>	IOZCAS	China: Ningxia, Henanshan	106.00	38.80	2000
<i>N. confucianus</i>	IOZCAS	China: Ningxia, Henanshan	106.00	38.80	2000
<i>N. confucianus</i>	IOZCAS	China: Ningxia, Henanshan	106.00	38.80	2000
<i>N. confucianus</i>	IOZCAS	China: Sichuan, Qingchuan, Tangjiahe	104.74	32.60	2550
<i>N. confucianus</i>	IOZCAS	China: Sichuan, Qingchuan, Tangjiahe	104.74	32.60	2550
<i>N. confucianus</i>	IOZCAS	China: Sichuan, Qingchuan, Tangjiahe	104.74	32.60	2550
<i>N. confucianus</i>	IOZCAS	China: Yunnan, Gongshan	98.67	27.73	
<i>N. confucianus</i>	IOZCAS	China: Yunnan, Lincang, Lincang Snow Mountain	100.03	23.90	3100
<i>N. confucianus</i>	IOZCAS	China: Yunnan, Jingdong, Ailao Mountain	101.01	24.53	2490
<i>N. confucianus</i>	IOZCAS	China: Yunnan, Lincang, Lincang Snow Mountain	100.03	23.90	2800
<i>N. confucianus</i>	IOZCAS	China: Yunnan, Qiubei County	104.19	24.03	
<i>N. confucianus</i>	IOZCAS	China: Yunnan, Shangri-la	99.00	27.00	2530
<i>N. confucianus</i>	IOZCAS	China: Yunnan, Shangri-la	99.00	27.00	2530
<i>N. confucianus</i>	IOZCAS	China: Yunnan, Shangri-la	99.00	27.00	1950
<i>N. confucianus</i>	IOZCAS	China: Jilin, Tuquan	120.57	45.38	
<i>N. confucianus</i>	IOZCAS	China: Jilin, Tuquan	120.57	45.38	
<i>N. confucianus</i>	IOZCAS	China: Jilin, Tuquan	120.57	45.38	
<i>N. confucianus</i>	IOZCAS	China: Jilin, Tuquan	120.57	45.38	
<i>N. confucianus</i>	IOZCAS	China: Liaoning, Beizhen	121.80	41.60	
<i>N. confucianus</i>	IOZCAS	China: Hebei, Tangshan	108.02	36.93	
<i>N. confucianus</i>	IOZCAS	China: Hebei, Tangshan	108.02	36.93	
<i>N. confucianus</i>	IOZCAS	China: Hebei, Tangshan	108.02	36.93	
<i>N. confucianus</i>	IOZCAS	China: Shanxi, Yuxian	114.20	39.60	
<i>N. confucianus</i>	IOZCAS	China: Shaaxi, Yanan	109.47	36.60	
<i>N. confucianus</i>	IOZCAS	China: Shaaxi, Yanan	109.47	36.60	
<i>N. confucianus</i>	IOZCAS	China: Shaaxi, Yanan	109.47	36.60	
<i>N. confucianus</i>	IOZCAS	China: Gansu, Wenxian	104.70	32.95	
<i>N. confucianus</i>	IOZCAS	China: Gansu, Wenxian	104.70	32.95	
<i>N. confucianus</i>	IOZCAS	China: Gansu, Wenxian	104.70	32.95	
<i>N. confucianus</i>	IOZCAS	China: Sichuan, Wanyuan	108.06	32.07	
<i>N. confucianus</i>	IOZCAS	China: Sichuan, Wanyuan	108.06	32.07	
<i>N. confucianus</i>	IOZCAS	China: Chongqing, Wushan	109.86	31.01	
<i>N. confucianus</i>	IOZCAS	China: Anhui, Susong	116.13	30.15	
<i>N. confucianus</i>	IOZCAS	China: Sichuan, Decha, Yajiang	101.02	30.03	
<i>N. confucianus</i>	IOZCAS	China: Sichuan, Decha, Yajiang	101.02	30.03	
<i>N. confucianus</i>	IOZCAS	China: Sichuan, Decha, Yajiang	101.02	30.03	

Species	Lab	Collecting Locality	Longitude	Latitude	Altitude/m
<i>N. confucianus</i>	IOZCAS	China: Sichuan, Kangding	102.03	32.05	
<i>N. confucianus</i>	IOZCAS	China: Sichuan, Kangding	102.03	32.05	
<i>N. confucianus</i>	IOZCAS	China: Yunnan, Deqin	98.93	28.49	
<i>N. confucianus</i>	IOZCAS	China: Yunnan, Deqin	98.93	28.49	
<i>N. confucianus</i>	IOZCAS	China: Yunnan, Deqin	98.93	28.49	
<i>N. confucianus</i>	Shandong University	Licheng, Shanxi, China	113.39	36.79	1034
<i>N. confucianus</i>	Shandong University	Zuoquan, Shanxi, China	113.48	37.14	1859
<i>N. confucianus</i>	Shandong University	Zuoquan, Shanxi, China	113.48	37.14	1859
<i>N. confucianus</i>	Shandong University	Zuoquan, Shanxi, China	113.47	37.15	1482
<i>N. confucianus</i>	Shandong University	Lingchuan, Shanxi, China	113.37	35.56	1084
<i>N. confucianus</i>	Shandong University	Lingchuan, Shanxi, China	113.37	35.56	1107
<i>N. confucianus</i>	Shandong University	Lingchuan, Shanxi, China	113.36	35.57	1093
<i>N. confucianus</i>	Shandong University	Lingchuan, Shanxi, China	113.36	35.57	1093
<i>N. confucianus</i>	Shandong University	Lingchuan, Shanxi, China	113.36	35.57	1093
<i>N. confucianus</i>	Shandong University	Wolong, Sichuan, China	103.19	31.04	1986
<i>N. confucianus</i>	Shandong University	Wolong, Sichuan, China	103.19	31.04	1986
<i>N. confucianus</i>	Shandong University	Wolong, Sichuan, China	103.19	31.04	1986
<i>N. confucianus</i>	Shandong University	Balangshan, Sichuan, China	102.97	30.85	2810
<i>N. confucianus</i>	Shandong University	Lushan, Shandong, China	118.05	36.31	859
<i>N. confucianus</i>	Shandong University	Naoniushan, Jilin, China	121.69	45.78	446
<i>N. confucianus</i>	Shandong University	Naoniushan, Jilin, China	121.69	45.78	424
<i>N. confucianus</i>	Shandong University	Haitangshan, Liaoning, China	121.84	41.94	417
<i>N. confucianus</i>	Shandong University	Haitangshan, Liaoning, China	121.84	41.94	417

Species	Lab	Collecting Locality	Longitude	Latitude	Altitude/m
<i>N. confucianus</i>	Shandong University	Haitangshan, Liaoning, China	121.84	41.94	417
<i>N. confucianus</i>	Shandong University	Zunhua, Hebei, China	117.64	40.20	220
<i>N. confucianus</i>	Shandong University	Zunhua, Hebei, China	117.59	40.19	299
<i>N. confucianus</i>	Shandong University	Zunhua, Hebei, China	117.59	40.19	299
<i>N. confucianus</i>	Shandong University	Zunhua, Hebei, China	117.59	40.19	299
<i>N. confucianus</i>	Shandong University	Zunhua, Hebei, China	117.59	40.19	299
<i>N. confucianus</i>	Shandong University	Hanwangshan, Hebei, China	113.71	36.54	728
<i>N. confucianus</i>	Shandong University	Baoxing, Sichuan, China	102.81	30.37	1144
<i>N. confucianus</i>	Shandong University	Baoxing, Sichuan, China	102.81	30.37	1144
<i>N. confucianus</i>	Shandong University	Baoxing, Sichuan, China	102.75	30.40	1190
<i>N. confucianus</i>	Shandong University	Baoxing, Sichuan, China	102.75	30.40	1190
<i>N. confucianus</i>	Shandong University	Baoxing, Sichuan, China	102.55	30.42	1920
<i>N. confucianus</i>	Shandong University	Baoxing, Sichuan, China	102.55	30.42	1920
<i>N. confucianus</i>	Shandong University	Baoxing, Sichuan, China	102.55	30.42	1920
<i>N. confucianus</i>	Shandong University	Baoxing, Sichuan, China	102.55	30.42	1920
<i>N. confucianus</i>	Shandong University	Laojunshan, Henan, China	111.64	33.76	815
<i>N. confucianus</i>	Shandong University	Laojunshan, Henan, China	111.64	33.75	790
<i>N. confucianus</i>	Shandong University	Laojunshan, Henan, China	111.64	33.75	790
<i>N. confucianus</i>	Shandong University	Laojunshan, Henan, China	111.64	33.74	1019
<i>N. confucianus</i>	Shandong University	Laojunshan, Henan, China	111.64	33.74	1019
<i>N. confucianus</i>	Shandong University	Laojunshan, Henan, China	111.64	33.74	1019

Species	Lab	Collecting Locality	Longitude	Latitude	Altitude/m
<i>N. confucianus</i>	Shandong University	Laojunshan, Henan, China	111.64	33.74	1019
<i>N. confucianus</i>	Shandong University	Laojunshan, Henan, China	111.64	33.74	1019
<i>N. confucianus</i>	Shandong University	Laojunshan, Henan, China	111.64	33.74	1019
<i>N. confucianus</i>	Shandong University	Laojunshan, Henan, China	111.64	33.75	896
<i>N. confucianus</i>	Shandong University	Laojunshan, Henan, China	111.64	33.75	896
<i>N. confucianus</i>	Shandong University	Shennongjia, Hubei, China	110.36	31.49	1837
<i>N. confucianus</i>	Shandong University	Shennongjia, Hubei, China	110.36	31.49	1837
<i>N. confucianus</i>	Shandong University	Shennongjia, Hubei, China	111.43	31.45	1392
<i>N. confucianus</i>	Shandong University	Shennongjia, Hubei, China	111.43	31.45	1392
<i>N. confucianus</i>	Shandong University	Shennongjia, Hubei, China	110.38	31.48	1225
<i>N. confucianus</i>	Shandong University	Shennongjia, Hubei, China	110.38	31.48	1225
<i>N. confucianus</i>	Shandong University	Shennongjia, Hubei, China	110.39	31.48	1188
<i>N. confucianus</i>	Shandong University	Liuan, Anhui, China	115.82	31.22	494
<i>N. confucianus</i>	Shandong University	Liuan, Anhui, China	116.08	31.13	490
<i>N. confucianus</i>	Shandong University	Laoshan, Jiangsu, China	118.60	32.10	148
<i>N. confucianus</i>	Shandong University	Maoshan, Jiangsu, China	119.30	31.79	93
<i>N. confucianus</i>	Shandong University	Maoshan, Jiangsu, China	119.30	31.79	93
<i>N. confucianus</i>	Shandong University	Maoshan, Jiangsu, China	119.30	31.79	93
<i>N. confucianus</i>	Shandong University	Maoshan, Jiangsu, China	119.32	31.80	93
<i>N. confucianus</i>	Shandong University	Mengshan, Shandong, China	117.94	35.55	780
<i>N. confucianus</i>	Shandong University	Mengshan, Shandong, China	117.94	35.55	780

Species	Lab	Collecting Locality	Longitude	Latitude	Altitude/m
<i>N. confucianus</i>	Shandong University	Mengshan, Shandong, China	117.94	35.55	780
<i>N. confucianus</i>	Shandong University	Mengshan, Shandong, China	117.94	35.55	780
<i>N. confucianus</i>	Shandong University	Mengshan, Shandong, China	117.94	35.55	780
<i>N. confucianus</i>	Shandong University	Mengshan, Shandong, China	117.94	35.55	912
<i>N. confucianus</i>	Shandong University	Mengshan, Shandong, China	117.94	35.55	912
<i>N. confucianus</i>	Shandong University	Mengshan, Shandong, China	117.94	35.56	733
<i>N. confucianus</i>	Shandong University	Mengshan, Shandong, China	117.94	35.56	733
<i>N. gladiusmaculus</i>	IOZCAS	China: Tibet, Milin, Pai Village	94.45	29.40	3114
<i>N. gladiusmaculus</i>	IOZCAS	China: Tibet, Milin, Pai Village	94.45	29.40	3114
<i>N. gladiusmaculus</i>	IOZCAS	China: Tibet, Milin, Pai Village	94.45	29.40	3114
<i>N. gladiusmaculus</i>	IOZCAS	China: Tibet, Milin, Pai Village	94.45	29.40	3030
<i>N. gladiusmaculus</i>	IOZCAS	China: Tibet, Milin, Pai Village	94.45	29.40	3030
<i>N. gladiusmaculus</i>	IOZCAS	China: Tibet, Bayi Village	93.41	29.83	3000
<i>N. gladiusmaculus</i>	IOZCAS	China: Tibet, Bayi Village	93.41	29.83	3000
<i>N. gladiusmaculus</i>	IOZCAS	China: Tibet, Bayi Village	93.41	29.83	2980
<i>N. gladiusmaculus</i>	IOZCAS	China: Tibet, Milin, Pai Village	94.45	29.40	3080

[illegible]

Species	Lab	Collecting Locality	Longitude	Latitude	Altitude/m
<i>N. gladiusmaculus</i>	IOZCAS	China: Tibet, Linzhi	94.33	29.30	2979
<i>N. gladiusmaculus</i>	IOZCAS	China: Tibet, Linzhi	94.33	29.30	2979
<i>N. gladiusmaculus</i>	IOZCAS	China: Tibet, Linzhi	94.33	29.30	2979
<i>N. gladiusmaculus</i>	IOZCAS	China: Tibet, Linzhi	94.33	29.30	2979
<i>N. gladiusmaculus</i>	IOZCAS	China: Tibet, Linzhi	94.33	29.30	2979
<i>N. gladiusmaculus</i>	IOZCAS	China, Tibet, Yadong	88.91	27.48	2830
<i>N. gladiusmaculus</i>	IOZCAS	China, Tibet, Yadong	88.91	27.48	2830
<i>N. gladiusmaculus</i>	IOZCAS	China, Tibet, Yadong	88.91	27.48	2830
<i>N. gladiusmaculus</i>	IOZCAS	China, Tibet, Yadong	88.91	27.48	2830
<i>N. lotipes</i>	IOZCAS	Viet Nam: Bac Kan	105.80	22.10	
<i>N. lotipes</i>	IOZCAS	Viet Nam: Bac Kan	105.80	22.10	
<i>N. lotipes</i>	IOZCAS	China: Fujian, Wuyi Mountain	118.02	27.46	500
<i>N. lotipes</i>	IOZCAS	China: Fujian, Wuyi Mountain	118.02	27.46	500
<i>N. lotipes</i>	IOZCAS	China: Fujian, Guadun, Wuyi Mountain	118.02	27.46	1280
<i>N. lotipes</i>	IOZCAS	China: Fujian, Guadun, Wuyi Mountain	118.02	27.46	1280
<i>N. lotipes</i>	IOZCAS	China: Fujian, Guadun, Wuyi Mountain	118.02	27.46	1280
<i>N. lotipes</i>	IOZCAS	China: Fujian, Guadun, Wuyi Mountain	118.02	27.46	1280
<i>N. lotipes</i>	IOZCAS	China: Fujian, Guadun, Wuyi Mountain	118.02	27.46	1300-1400
<i>N. lotipes</i>	IOZCAS	China: Fujian, Guadun, Wuyi Mountain	118.02	27.46	1500

Species	Lab	Collecting Locality	Longitude	Latitude	Altitude/m
<i>N. lotipes</i>	IOZCAS	China: Fujian, Guadun, Wuyi Mountain	118.02	27.46	1500
<i>N. lotipes</i>	IOZCAS	China: Fujian, Guadun, Wuyi Mountain	118.02	27.46	1500
<i>N. lotipes</i>	IOZCAS	China: Fujian, Guadun, Wuyi Mountain	118.02	27.46	1411
<i>N. lotipes</i>	IOZCAS	China: Fujian, Guadun, Wuyi Mountain	118.02	27.46	1411
<i>N. lotipes</i>	IOZCAS	China: Guangdong, Shaoguan	113.62	24.84	
<i>N. lotipes</i>	IOZCAS	China: Guangdong, Shaoguan	113.62	24.84	
<i>N. lotipes</i>	IOZCAS	China: Guangxi Pingxiang	106.75	22.11	400
<i>N. lotipes</i>	IOZCAS	China: Guizhou, Tongren, Hexi Village	109.21	27.73	600
<i>N. lotipes</i>	IOZCAS	China: Guizhou, Jiangkou, Fanjing Mountain	108.83	27.70	800
<i>N. lotipes</i>	IOZCAS	China: Guizhou, Jiangkou, Fanjing Mountain	108.83	27.70	800
<i>N. lotipes</i>	IOZCAS	China: Guizhou, Jiangkou, Fanjing Mountain	108.83	27.70	800
<i>N. lotipes</i>	IOZCAS	China: Guizhou, Jiangkou, Fanjing Mountain	108.83	27.70	2302
<i>N. lotipes</i>	IOZCAS	China: Guizhou, Jiangkou, Fanjing Mountain	108.83	27.70	1984
<i>N. lotipes</i>	IOZCAS	China: Guizhou, Jiangkou, Fanjing Mountain	108.83	27.70	1984
<i>N. lotipes</i>	IOZCAS	China: Guizhou, Jiangkou, Fanjing Mountain	108.83	27.70	1984
<i>N. lotipes</i>	IOZCAS	China: Guizhou, Jiangkou, Fanjing Mountain	108.83	27.70	1900
<i>N. lotipes</i>	IOZCAS	China: Guizhou, Jiangkou, Fanjing Mountain	108.83	27.70	1900
<i>N. lotipes</i>	IOZCAS	China: Guizhou, Jiangkou, Fanjing Mountain	108.83	27.70	1800
<i>N. lotipes</i>	IOZCAS	China: Guizhou, Jiangkou, Fanjing Mountain	108.83	27.70	1700
<i>N. lotipes</i>	IOZCAS	China: Guizhou, Jiangkou, Minxiao	108.83	27.70	800
<i>N. lotipes</i>	IOZCAS	China: Guizhou, Zhunyi, Fenggang, Maotai	105.79	25.00	912
<i>N. lotipes</i>	IOZCAS	China: Guizhou, Libo	107.88	25.42	600
<i>N. lotipes</i>	IOZCAS	China: Guizhou, Libo	107.88	25.42	600
<i>N. lotipes</i>	IOZCAS	China: Guizhou, Libo	107.88	25.42	600

Species	Lab	Collecting Locality	Longitude	Latitude	Altitude e/m
<i>N. lotipes</i>	IOZCAS	China: Guizhou, Xingyi	104.89	25.09	1200
<i>N. lotipes</i>	IOZCAS	China: Hunan, Chenzhou	113.00	25.79	
<i>N. lotipes</i>	IOZCAS	China: Hainan, Qiongzong	109.83	19.03	200
<i>N. lotipes</i>	IOZCAS	China: Hainan, Qiongzong	109.83	19.03	200
<i>N. lotipes</i>	IOZCAS	China: Hunan, Shimen, Shaosuo, Hupin Mountain	110.78	30.02	1570
<i>N. lotipes</i>	IOZCAS	China: Hunan, Shimen, Shaosuo, Hupin Mountain	110.78	30.02	1570
<i>N. lotipes</i>	IOZCAS	China: Hunan, Shimen, Shaosuo, Hupin Mountain	110.78	30.02	1570
<i>N. lotipes</i>	IOZCAS	China: Hunan, Shimen, Shaosuo, Hupin Mountain	110.78	30.02	1570
<i>N. lotipes</i>	IOZCAS	China: Hunan, Shimen, Shaosuo, Hupin Mountain	110.78	30.02	1570
<i>N. lotipes</i>	IOZCAS	China: Hunan, Shimen, Shaosuo, Hupin Mountain	110.78	30.02	1570
<i>N. lotipes</i>	IOZCAS	China: Hunan, Hupin Mountain, Leijiatang	110.78	30.02	1460
<i>N. lotipes</i>	IOZCAS	China: Hunan, Hupin Mountain, Leijiatang	110.78	30.02	1460
<i>N. lotipes</i>	IOZCAS	China: Hunan, Hupin Mountain, Leijiatang	110.78	30.02	1460
<i>N. lotipes</i>	IOZCAS	China: Hunan, Hupin Mountain, Leijiatang	110.78	30.02	1460
<i>N. lotipes</i>	IOZCAS	China: Hunan, Hupin Mountain, Leijiatang	110.78	30.02	1460
<i>N. lotipes</i>	IOZCAS	China: Hunan, Hupin Mountain, Leijiatang	110.78	30.02	1460
<i>N. lotipes</i>	IOZCAS	China: Hunan, Hupin Mountain, Leijiatang	110.78	30.02	1460
<i>N. lotipes</i>	IOZCAS	China: Hunan, Hupin Mountain, Leijiatang	110.78	30.02	1460
<i>N. lotipes</i>	IOZCAS	China: Hunan, Hupin Mountain, Leijiatang	110.78	30.02	1460
<i>N. lotipes</i>	IOZCAS	China: Hunan, Sangzhi, Badagong Mountain	109.68	29.65	1400
<i>N. lotipes</i>	IOZCAS	China: Hunan, Sangzhi, Badagong Mountain	109.68	29.65	1400
<i>N. lotipes</i>	IOZCAS	China: Hunan, Sangzhi, Badagong Mountain	109.68	29.65	1400

Species	Lab	Collecting Locality	Longitude	Latitude	Altitude/m
<i>N. lotipes</i>	IOZCAS	China: Hunan, Sangzhi, Badagong Mountain	109.68	29.65	1400
<i>N. lotipes</i>	IOZCAS	China: Hunan, Sangzhi, Badagong Mountain	109.68	29.65	1400
<i>N. lotipes</i>	IOZCAS	China: Hunan, Sangzhi, Badagong Mountain	109.68	29.65	1400
<i>N. lotipes</i>	IOZCAS	China: Hunan, Sangzhi, Badagong Mountain	109.68	29.65	1400
<i>N. lotipes</i>	IOZCAS	China: Hunan, Sangzhi, Badagong Mountain	109.68	29.65	1400
<i>N. lotipes</i>	IOZCAS	China: Hunan, Sangzhi, Badagong Mountain	109.68	29.65	1400
<i>N. lotipes</i>	IOZCAS	China: Hunan, Sangzhi, Badagong Mountain	109.68	29.65	1400
<i>N. lotipes</i>	IOZCAS	China: Hunan, Sangzhi, Badagong Mountain	109.68	29.65	1400
<i>N. lotipes</i>	IOZCAS	China: Hunan, Sangzhi, Badagong Mountain	109.68	29.65	1400
<i>N. lotipes</i>	IOZCAS	China: Hunan, Xinhua	109.95	27.44	
<i>N. lotipes</i>	IOZCAS	China: Hunan, Zhongfang	109.95	27.44	
<i>N. lotipes</i>	IOZCAS	China: Hunan, Zhongfang	109.95	27.44	
<i>N. lotipes</i>	IOZCAS	China: Hunan, Zhongfang	109.95	27.44	
<i>N. lotipes</i>	IOZCAS	China: Hunan, Zhongfang	109.95	27.44	
<i>N. lotipes</i>	IOZCAS	China: Hunan, Zhongfang	109.95	27.44	
<i>N. lotipes</i>	IOZCAS	China: Hunan, Zhongfang	109.95	27.44	
<i>N. lotipes</i>	IOZCAS	China: Hunan, Zhongfang	109.95	27.44	
<i>N. lotipes</i>	IOZCAS	China: Hunan, Zhongfang	109.95	27.44	
<i>N. lotipes</i>	IOZCAS	China: Anhui, Tunxi	118.31	29.72	
<i>N. lotipes</i>	IOZCAS	China: Jiang su, Wuxi	120.30	31.57	50
<i>N. lotipes</i>	IOZCAS	China: Jiang su, Wuxi	120.30	31.57	50
<i>N. lotipes</i>	IOZCAS	China: Jiangxi, Yingtan	117.00	28.23	80
<i>N. lotipes</i>	IOZCAS	China: Jiangxi, Yingtan	117.00	28.23	80
<i>N. lotipes</i>	IOZCAS	China: Anhui, Qingliangfeng	117.83	30.00	1420
<i>N. lotipes</i>	IOZCAS	China: Anhui, Qingliangfeng	117.83	30.00	1400
<i>N. lotipes</i>	IOZCAS	China: Anhui, Qingliangfeng	117.83	30.00	1400
<i>N. lotipes</i>	IOZCAS	China: Zhejiang, Tianmushan	120.10	30.26	1400-1500
<i>N. lotipes</i>	IOZCAS	China: Zhejiang, Tianmushan	120.10	30.26	1400-1500
<i>N. lotipes</i>	IOZCAS	China: Zhejiang, Wencheng	119.75	27.77	
<i>N. lotipes</i>	IOZCAS	China: Zhejiang, Wencheng	119.75	27.77	

Species	Lab	Collecting Locality	Longitude	Latitude	Altitude/m
<i>N. lotipes</i>	IOZCAS	China: Zhejiang, Wencheng	119.75	27.77	
<i>N. lotipes</i>	IOZCAS	China: Chongqing, Nanchuan, Jinfoshan	107.20	29.00	
<i>N. lotipes</i>	IOZCAS	China: Zhejiang, Yongjia	120.50	28.50	
<i>N. lotipes</i>	IOZCAS	China: Zhejiang, Yongjia	120.50	28.50	
<i>N. lotipes</i>	IOZCAS	China: Zhejiang, Yongjia	120.50	28.50	
<i>N. lotipes</i>	IOZCAS	China: Zhejiang, Yongjia	120.50	28.50	
<i>N. lotipes</i>	IOZCAS	China: Chongqing, Wushan	109.86	31.01	
<i>N. lotipes</i>	IOZCAS	China: Hunan, Yueyang	113.00	29.30	
<i>N. lotipes</i>	IOZCAS	China: Fujian, Fuzhou	119.30	26.08	
<i>N. lotipes</i>	IOZCAS	China: Fujian, Wuyi Mountain	118.02	27.46	
<i>N. lotipes</i>	IOZCAS	China: Fujian, Wuyi Mountain	118.02	27.46	
<i>N. lotipes</i>	IOZCAS	China: Zhejiang, Lishui	119.92	28.45	
<i>N. lotipes</i>	IOZCAS	China: Fujian, Fuzhou	119.30	26.08	
<i>N. lotipes</i>	IOZCAS	China: Hunan, Anjiang	109.00	28.00	
<i>N. lotipes</i>	IOZCAS	China: Guizhou, Leishan	108.07	26.38	
<i>N. lotipes</i>	IOZCAS	China: Guangxi, Shangsi	107.98	22.16	
<i>N. lotipes</i>	IOZCAS	China: Guangxi, Tianlin	106.24	24.31	
<i>N. lotipes</i>	IOZCAS	Viet Nam: Lang Son, Huu Lien	106.33	21.66	230
<i>N. lotipes</i>	IOZCAS	Viet Nam: Lang Son, Huu Lien	106.33	21.66	230
<i>N. lotipes</i>	IOZCAS	Viet Nam: Lang Son, Huu Lien	106.33	21.66	230
<i>N. lotipes</i>	IOZCAS	Viet Nam: Lang Son, Huu Lien	106.33	21.66	230
<i>N. lotipes</i>	IOZCAS	Viet Nam: Lang Son, Huu Lien	106.33	21.66	230
<i>N. lotipes</i>	IOZCAS	China: Zhejiang, Qingyuan, Baishanzu Mountain	118.80	27.80	350
<i>N. lotipes</i>	IOZCAS	China: Zhejiang, Qingyuan, Baishanzu Mountain	118.80	27.80	1700
<i>N. lotipes</i>	IOZCAS	China, Zhejiang, Tiantai	121.03	29.15	120
<i>N. lotipes</i>	Shandong University	Nanling, Guangdong, China	112.99	24.93	1831
<i>N. lotipes</i>	Shandong University	Nanling, Guangdong, China	112.99	24.93	1831
<i>N. lotipes</i>	Shandong University	Nanling, Guangdong, China	112.99	24.93	1831
<i>N. lotipes</i>	Shandong University	Nanling, Guangdong, China	112.99	24.93	1831
<i>N. lotipes</i>	Shandong University	Nanling, Guangdong, China	112.99	24.93	1831
<i>N. lotipes</i>	Shandong University	Nanling, Guangdong, China	112.99	24.93	1831
<i>N. lotipes</i>	Shandong University	Nanling, Guangdong, China	112.99	24.93	1831
<i>N. lotipes</i>	Shandong University	Xinyi, Guangdong, China	110.70	22.46	480

Species	Lab	Collecting Locality	Longitude	Latitude	Altitude/m
<i>N. lotipes</i>	<i>Shandong University</i>	Jinggangshan, Jingxi, China	114.18	26.62	777
<i>N. lotipes</i>	<i>Shandong University</i>	Jinggangshan, Jingxi, China	114.18	26.62	777
<i>N. lotipes</i>	<i>Shandong University</i>	Jinggangshan, Jingxi, China	114.18	26.62	777
<i>N. lotipes</i>	<i>Shandong University</i>	Jinggangshan, Jingxi, China	114.18	26.62	777
<i>N. lotipes</i>	<i>Shandong University</i>	Jinggangshan, Jingxi, China	114.12	26.49	1427
<i>N. lotipes</i>	<i>Shandong University</i>	Jinggangshan, Jingxi, China	114.12	26.49	1427
<i>N. lotipes</i>	<i>Shandong University</i>	Jinggangshan, Jingxi, China	114.12	26.49	1427
<i>N. lotipes</i>	<i>Shandong University</i>	Jinggangshan, Jingxi, China	114.12	26.49	1427
<i>N. lotipes</i>	<i>Shandong University</i>	Jinggangshan, Jingxi, China	114.20	26.52	397
<i>N. lotipes</i>	<i>Shandong University</i>	Jinggangshan, Jingxi, China	114.15	26.53	763
<i>N. lotipes</i>	<i>Shandong University</i>	Jishou, Hunan, China	109.72	28.29	188
<i>N. lotipes</i>	<i>Shandong University</i>	Jishou, Hunan, China	109.72	28.29	188
<i>N. lotipes</i>	<i>Shandong University</i>	Jishou, Hunan, China	109.37	28.09	797
<i>N. lotipes</i>	<i>Shandong University</i>	Jishou, Hunan, China	109.37	28.09	797
<i>N. lotipes</i>	<i>Shandong University</i>	Jishou, Hunan, China	109.37	28.09	797
<i>N. lotipes</i>	<i>Shandong University</i>	Jishou, Hunan, China	109.37	28.09	797
<i>N. lotipes</i>	<i>Shandong University</i>	Jishou, Hunan, China	109.37	28.09	797
<i>N. lotipes</i>	<i>Shandong University</i>	Jishou, Hunan, China	109.37	28.09	797
<i>N. lotipes</i>	<i>Shandong University</i>	Xiangxi, Hunan, China	110.09	28.67	720
<i>N. lotipes</i>	<i>Shandong University</i>	Xiangxi, Hunan, China	110.09	28.67	720
<i>N. lotipes</i>	<i>Shandong University</i>	Xiangxi, Hunan, China	110.09	28.67	720

Species	Lab	Collecting Locality	Longitude	Latitude	Altitude/m
<i>N. lotipes</i>	Shandong University	Xiangxi, Hunan, China	110.26	28.81	570
<i>N. lotipes</i>	Shandong University	Xiangxi, Hunan, China	110.26	28.81	570
<i>N. lotipes</i>	Shandong University	Xiangxi, Hunan, China	110.26	28.81	570
<i>N. lotipes</i>	Shandong University	Xiangxi, Hunan, China	110.26	28.81	570
<i>N. lotipes</i>	Shandong University	Xiangxi, Hunan, China	110.26	28.81	570
<i>N. lotipes</i>	Shandong University	Wuyishan, Jiangxi, China	117.73	27.84	871
<i>N. lotipes</i>	Shandong University	Wuyishan, Jiangxi, China	117.73	27.84	871
<i>N. lotipes</i>	Shandong University	Wuyishan, Jiangxi, China	117.73	27.84	871
<i>N. lotipes</i>	Shandong University	Wuyishan, Jiangxi, China	117.73	27.84	871
<i>N. lotipes</i>	Shandong University	Wuyishan, Jiangxi, China	117.73	27.84	871
<i>N. lotipes</i>	Shandong University	Wuyishan, Jiangxi, China	117.76	27.85	1770
<i>N. lotipes</i>	Shandong University	Wuyishan, Jiangxi, China	117.76	27.85	1770
<i>N. lotipes</i>	Shandong University	Wuyishan, Jiangxi, China	117.76	27.85	1770
<i>N. lotipes</i>	Shandong University	Wuyishan, Jiangxi, China	117.76	27.85	1770
<i>N. lotipes</i>	Shandong University	Wuyishan, Jiangxi, China	117.76	27.85	1770
<i>N. lotipes</i>	Shandong University	Wuyishan, Jiangxi, China	117.76	27.85	1770
<i>N. lotipes</i>	Shandong University	Wuyishan, Jiangxi, China	117.76	27.85	1770
<i>N. lotipes</i>	Shandong University	Wuyishan, Fujian, China	117.66	27.71	808
<i>N. lotipes</i>	Shandong University	Wuyishan, Fujian, China	117.66	27.71	808
<i>N. lotipes</i>	Shandong University	Wuyishan, Fujian, China	117.66	27.71	808
<i>N. lotipes</i>	Shandong University	Chongzuo, Guangxi, China	106.98	22.57	213

Species	Lab	Collecting Locality	Longitude	Latitude	Altitude/m
<i>N. lotipes</i>	Shandong University	Nonggang, Guangxi, China	107.00	22.48	275
<i>N. lotipes</i>	Shandong University	Nonggang, Guangxi, China	107.00	22.48	275
<i>N. lotipes</i>	Shandong University	Jinhua, Zhejiang, China	119.64	29.12	56
<i>N. lotipes</i>	Shandong University	Jinhua, Zhejiang, China	119.64	29.12	56
<i>N. lotipes</i>	Shandong University	Jinhua, Zhejiang, China	119.64	29.12	56
<i>N. lotipes</i>	Shandong University	Jinhua, Zhejiang, China	119.64	29.12	62
<i>N. lotipes</i>	Shandong University	Jinhua, Zhejiang, China	119.64	29.12	62
<i>N. lotipes</i>	Shandong University	Jinhua, Zhejiang, China	119.64	29.12	62
<i>N. lotipes</i>	Shandong University	Jinhua, Zhejiang, China	119.64	29.12	62
<i>N. lotipes</i>	Shandong University	Jinhua, Zhejiang, China	119.64	29.20	587
<i>N. lotipes</i>	Shandong University	Jinhua, Zhejiang, China	119.64	29.20	587
<i>N. lotipes</i>	Shandong University	Jinhua, Zhejiang, China	119.64	29.20	587
<i>N. lotipes</i>	Shandong University	Jinhua, Zhejiang, China	119.64	29.20	587
<i>N. lotipes</i>	Shandong University	Jinhua, Zhejiang, China	119.64	29.20	587
<i>N. lotipes</i>	Shandong University	Jinhua, Zhejiang, China	119.64	29.20	587
<i>N. lotipes</i>	Shandong University	Jinhua, Zhejiang, China	119.64	29.20	587
<i>N. lotipes</i>	Shandong University	Jinhua, Zhejiang, China	119.64	29.12	63
<i>N. lotipes</i>	Shandong University	Jinhua, Zhejiang, China	119.64	29.12	63
<i>N. lotipes</i>	Shandong University	Jinhua, Zhejiang, China	119.64	29.12	63
<i>N. lotipes</i>	Shandong University	Langyashan, Anhui, China	118.28	32.28	220

Species	Lab	Collecting Locality	Longitude	Latitude	Altitude/m
<i>N. lotipes</i>	Shandong University	Laoshan, Jiangsu, China	118.59	32.10	76
<i>N. lotipes</i>	Shandong University	Laoshan, Jiangsu, China	118.60	32.10	148
<i>N. lotipes</i>	Shandong University	Laoshan, Jiangsu, China	118.60	32.10	148
<i>N. lotipes</i>	Shandong University	Maoshan, Jiangsu, China	119.33	31.81	62
<i>N. lotipes</i>	Shandong University	Maoshan, Jiangsu, China	119.33	31.81	62
<i>N. lotipes</i>	Shandong University	Jinhua, Zhejiang, China	119.63	29.20	572
<i>N. lotipes</i>	Shandong University	Wuyishan, Fujian, China	117.89	27.84	330
<i>N. lotipes</i>	Shandong University	Shangrao, Jiangxi, China	117.84	28.32	133
<i>N. niviventer</i>	IOZCAS	China: Yunnan, Jingdong, Ailao Mountain	101.01	24.53	
<i>N. niviventer</i>	IOZCAS	China: Yunnan, Jingdong, Ailao Mountain	101.01	24.53	
<i>N. niviventer</i>	IOZCAS	China: Yunnan, Jingdong	100.82	24.42	
<i>N. niviventer</i>	IOZCAS	China: Yunnan, Shuangjiang	99.85	23.45	
<i>N. niviventer</i>	IOZCAS	China: Yunnan, Lvchun	102.42	23.01	
<i>N. niviventer</i>	IOZCAS	China: Yunnan, Lushui, Gaoligong	103.20	25.80	
<i>N. niviventer</i>	IOZCAS	China: Yunnan, Lushui, Gaoligong	103.20	25.80	
<i>N. niviventer</i>	IOZCAS	China: Yunnan, Lushui, Gaoligong	103.20	25.80	
<i>N. niviventer</i>	IOZCAS	China: Yunnan, Longyang	99.17	25.12	
<i>N. niviventer</i>	IOZCAS	China: Sichuan, Meigu	103.14	28.33	1860
<i>N. niviventer</i>	IOZCAS	China: Sichuan, Meigu	103.14	28.33	1860
<i>N. niviventer</i>	IOZCAS	China: Sichuan, Meigu	103.14	28.33	1860
<i>N. niviventer</i>	IOZCAS	China: Sichuan, Meigu	103.14	28.33	1860
<i>N. niviventer</i>	IOZCAS	China: Sichuan, Meigu	103.14	28.33	1860
<i>N. niviventer</i>	IOZCAS	China: Sichuan, Meigu	103.14	28.33	1860
<i>N. niviventer</i>	IOZCAS	China: Sichuan, Meigu	103.14	28.33	1860
<i>N. niviventer</i>	IOZCAS	China: Sichuan, Meigu	103.14	28.33	1860
<i>N. niviventer</i>	IOZCAS	China: Sichuan, Meigu	103.14	28.33	1900
<i>N. niviventer</i>	IOZCAS	China: Sichuan, Meigu	103.14	28.33	1900
<i>N. niviventer</i>	IOZCAS	China: Sichuan, Meigu	103.14	28.33	1900
<i>N. niviventer</i>	IOZCAS	China: Sichuan, Meigu	103.14	28.33	1900

[illegible]

Species	Lab	Collecting Locality	Longitude	Latitude	Altitude/m
<i>N. niviventer</i>	IOZCAS	China: Yunnan, Jingdong, Ailao Mountain	101.01	24.53	2391
<i>N. niviventer</i>	IOZCAS	China: Yunnan, Lincang, Lincang Snow Mountain	100.03	23.90	2500
<i>N. niviventer</i>	IOZCAS	China: Yunnan, Lincang, Lincang Snow Mountain	100.03	23.90	2500
<i>N. niviventer</i>	IOZCAS	China: Yunnan, Lincang, Lincang Snow Mountain	100.03	23.90	2400
<i>N. niviventer</i>	IOZCAS	China: Yunnan, Lincang, Lincang Snow Mountain	100.03	23.90	2300
<i>N. niviventer</i>	IOZCAS	China: Yunnan, Lincang, Lincang Snow Mountain	100.03	23.90	1700
<i>N. niviventer</i>	IOZCAS	China: Yunnan, Qiubei County	104.19	24.03	
<i>N. niviventer</i>	IOZCAS	China: Yunnan, Qiubei County	104.19	24.03	
<i>N. niviventer</i>	IOZCAS	China: Yunnan, Qiubei County	104.19	24.03	
<i>N. niviventer</i>	IOZCAS	China: Yunnan, Tengchong	98.47	25.03	1900
<i>N. niviventer</i>	IOZCAS	China: Yunnan, Tengchong	98.47	25.03	1900
<i>N. niviventer</i>	IOZCAS	China: Yunnan, Tengchong	98.47	25.03	1300
<i>N. niviventer</i>	IOZCAS	China: Guangxi, Jinxiu	110.18	24.14	
<i>N. niviventer</i>	IOZCAS	China: Guangxi, Jinxiu	110.18	24.14	
<i>N. niviventer</i>	IOZCAS	China: Guangxi, Shangsi	107.98	22.16	
<i>N. niviventer</i>	IOZCAS	Viet Nam, Lao Cai, Sapa	104.00	22.33	1900-1950
<i>N. pianmaensis</i>	IOZCAS	China: Yunnan, Dulongjiang	97.50	28.50	
<i>N. pianmaensis</i>	IOZCAS	China: Tibet, Chayu	97.49	28.62	
<i>N. pianmaensis</i>	IOZCAS	China: Tibet, Chayu	97.49	28.62	
<i>N. pianmaensis</i>	IOZCAS	China: Tibet, Chayu	97.49	28.62	
<i>N. pianmaensis</i>	IOZCAS	China: Tibet, Chayu	97.49	28.62	
<i>N. pianmaensis</i>	IOZCAS	China: Tibet, Chayu	97.49	28.62	
<i>N. pianmaensis</i>	IOZCAS	China: Yunnan, Longyang	99.17	25.12	
<i>N. pianmaensis</i>	IOZCAS	China: Yunnan, Lushui	98.82	25.97	
<i>N. pianmaensis</i>	IOZCAS	China: Tibet, Seji Mountain	94.93	30.00	2250
<i>N. pianmaensis</i>	IOZCAS	China: Tibet, Motuo	95.26	29.22	
<i>N. pianmaensis</i>	IOZCAS	China: Tibet, Motuo	95.26	29.22	
<i>N. pianmaensis</i>	IOZCAS	China: Tibet, Motuo	95.26	29.22	
<i>N. pianmaensis</i>	IOZCAS	China: Tibet, Seji Mountain	95.01	30.01	1950
<i>N. pianmaensis</i>	IOZCAS	China: Tibet, Seji Mountain	95.01	30.01	1950
<i>N. pianmaensis</i>	IOZCAS	China: Tibet, Seji Mountain	95.01	30.01	1950
<i>N. pianmaensis</i>	IOZCAS	China: Tibet, Seji Mountain	95.01	30.01	1950
<i>N. pianmaensis</i>	IOZCAS	China: Tibet, Seji Mountain	95.01	30.01	1950

Species	Lab	Collecting Locality	Longitude	Latitude	Altitude/m
<i>N. sacer</i>	Shandong University	Kunyushan, Shandong, China	121.72	37.27	240
<i>N. sacer</i>	Shandong University	Kunyushan, Shandong, China	121.72	37.27	240
<i>N. sacer</i>	Shandong University	Kunyushan, Shandong, China	121.72	37.27	240
<i>N. sacer</i>	Shandong University	Kunyushan, Shandong, China	121.72	37.27	240
<i>N. sacer</i>	Shandong University	Kunyushan, Shandong, China	121.72	37.27	240
<i>N. sacer</i>	Shandong University	Kunyushan, Shandong, China	121.74	37.31	97.9
<i>N. sacer</i>	Shandong University	Laiwu, Shandong, China	117.45	36.44	347
<i>N. sacer</i>	Shandong University	Zhengqishan, Shandong, China	122.18	37.34	110
<i>N. sacer</i>	Shandong University	Kunyushan, Shandong, China	121.73	37.27	420
<i>N. sacer</i>	Shandong University	Kunyushan, Shandong, China	121.73	37.27	420
<i>N. sacer</i>	Shandong University	Kunyushan, Shandong, China	121.73	37.27	420
<i>N. sacer</i>	Shandong University	Kunyushan, Shandong, China	121.73	37.27	420
<i>N. sacer</i>	Shandong University	Kunyushan, Shandong, China	121.73	37.27	420
<i>N. sacer</i>	Shandong University	Kunyushan, Shandong, China	121.73	37.27	420
<i>N. sacer</i>	Shandong University	Kunyushan, Shandong, China	121.73	37.27	420
<i>N. sacer</i>	Shandong University	Kunyushan, Shandong, China	121.73	37.27	420
<i>N. sacer</i>	Shandong University	Kunyushan, Shandong, China	121.73	37.27	420
<i>N. sacer</i>	Shandong University	Kunyushan, Shandong, China	121.73	37.27	420
<i>N. sacer</i>	Shandong University	Kunyushan, Shandong, China	121.73	37.27	420
<i>N. sacer</i>	Shandong University	Kunyushan, Shandong, China	121.73	37.27	420
<i>N. sacer</i>	Shandong University	Kunyushan, Shandong, China	121.73	37.27	420
<i>N. sacer</i>	Shandong University	Kunyushan, Shandong, China	121.73	37.27	420
<i>N. sacer</i>	Shandong University	Kunyushan, Shandong, China	121.73	37.27	420
<i>N. sacer</i>	Shandong University	Zhengqishan, Shandong, China	122.17	37.35	220
<i>N. sacer</i>	Shandong University	Zhengqishan, Shandong, China	122.17	37.35	220

[illegible]

Species	Lab	Collecting Locality	Longitude	Latitude	Altitude/m
<i>N. sacer</i>	Shandong University	Weihai, Shandong, China	122.19	37.23	125
<i>N. sacer</i>	Shandong University	Weihai, Shandong, China	122.19	37.23	125
<i>N. sacer</i>	Shandong University	Lushan, Shandong, China	118.05	36.31	859
<i>N. sacer</i>	Shandong University	Lushan, Shandong, China	118.05	36.31	859
<i>N. sacer</i>	Shandong University	Lushan, Shandong, China	118.05	36.31	859
<i>N. sacer</i>	Shandong University	Lushan, Shandong, China	118.05	36.30	869
<i>N. sacer</i>	Shandong University	Lushan, Shandong, China	118.06	36.30	907
<i>N. sacer</i>	Shandong University	Lushan, Shandong, China	118.06	36.30	907
<i>N. sacer</i>	Shandong University	Lushan, Shandong, China	118.06	36.30	907
<i>N. sacer</i>	Shandong University	Lushan, Shandong, China	118.06	36.30	925
<i>N. sacer</i>	Shandong University	Lushan, Shandong, China	118.06	36.30	925
<i>N. sacer</i>	Shandong University	Lushan, Shandong, China	118.06	36.30	925
<i>N. sacer</i>	Shandong University	Lushan, Shandong, China	118.06	36.30	925
<i>N. sacer</i>	Shandong University	Lushan, Shandong, China	118.06	36.30	925
<i>N. sacer</i>	Shandong University	Lushan, Shandong, China	118.06	36.30	925
<i>N. sacer</i>	Shandong University	Taishan, Shandong, China	117.20	36.41	847
<i>N. sacer</i>	Shandong University	Taishan, Shandong, China	117.19	36.44	800
<i>N. sacer</i>	Shandong University	Mengshan, Shandong, China	117.94	35.55	780
<i>N. sacer</i>	Shandong University	Mengshan, Shandong, China	117.94	35.55	912
<i>N. sacer</i>	Shandong University	Mengshan, Shandong, China	117.94	35.56	733
<i>N. sacer</i>	Shandong University	Mengshan, Shandong, China	117.94	35.56	733

Species	Lab	Collecting Locality	Longitude	Latitude	Altitude/m
<i>N. sacer</i>	Shandong University	Mengshan, Shandong, China	117.94	35.56	733
<i>N. sacer</i>	Shandong University	Mengshan, Shandong, China	118.06	35.73	308
<i>N. sacer</i>	Shandong University	Zhengqishan, Shandong, China	122.18	37.34	115
<i>N. sacer</i>	Shandong University	Zhengqishan, Shandong, China	122.18	37.34	115
<i>N. sacer</i>	Shandong University	Zhengqishan, Shandong, China	122.18	37.34	115
<i>N. sacer</i>	Shandong University	Zhengqishan, Shandong, China	122.18	37.34	115
<i>N. sacer</i>	IOZCAS	China: Shandong, Zibo	118.05	36.78	600
<i>N. sacer</i>	IOZCAS	China: Shandong, Zibo	118.05	36.78	600
<i>N. sacer</i>	IOZCAS	China, Shandong, Yantai	121.39	37.52	
<i>N. sacer</i>	IOZCAS	China, Shandong, Yantai	121.39	37.52	
<i>N. sacer</i>	IOZCAS	China, Shandong, Yantai	121.39	37.52	
<i>N. sacer</i>	IOZCAS	China, Shandong, Yantai	121.39	37.52	
<i>N. sacer</i>	IOZCAS	China, Shandong, Yantai	121.39	37.52	
<i>N. tenaster</i>	IOZCAS	Viet Nam: BiDup-NuiBaNP	108.66	12.16	2070
<i>N. tenaster</i>	IOZCAS	Viet Nam: BiDup-NuiBaNP	108.66	12.16	2070
<i>N. tenaster</i>	IOZCAS	Viet Nam: BiDup-NuiBaNP	108.66	12.16	
<i>N. tenaster</i>	IOZCAS	Viet Nam: BiDup-NuiBaNP	108.66	12.16	
<i>N. tenaster</i>	IOZCAS	Viet Nam: BiDup-NuiBaNP	108.66	12.16	
<i>N. tenaster</i>	IOZCAS	Viet Nam: BiDup-NuiBaNP	108.66	12.16	
<i>N. tenaster</i>	IOZCAS	Viet Nam: BiDup-NuiBaNP	108.66	12.16	
<i>N. tenaster</i>	IOZCAS	Viet Nam: Lam Dong, Bidup	108.40	12.10	1400
<i>N. tenaster</i>	IOZCAS	Viet Nam: Lam Dong, Bidup	108.40	12.10	1400
<i>N. tenaster</i>	IOZCAS	Viet Nam: Lam Dong, Bidup	108.40	12.10	1400
<i>N. tenaster</i>	IOZCAS	Viet Nam: Lam Dong, Bidup	108.40	12.10	1400

Supplementary Table S3. Collection information of molecular voucher specimens.

Species	Field Number	Museums	Locality	Longitude	Latitude
<i>N. andersoni</i>	HN2017 257	IOZCAS	China: Hunan, Sangzhi County, Badagong Mountain	109.81	29.66
<i>N. andersoni</i>	WL1402 85	IOZCAS	China: Sichuan, Wenchuan, Wolong Nature Reserve	102.90	30.80
<i>N. andersoni</i>	DB2004 5	IOZCAS	China: Sichuan, Luding, Gongga Mountain	101.50	29.50
<i>N. andersoni</i>	BZD446	IOZCAS	China: Yunnan, Deqin, Baimang Snow Mountain	99.37	27.63
<i>N. andersoni</i>	AYC471	IOZCAS	China: Yunnan, Deqin, Baimang Snow Mountain	99.37	27.63
<i>N. andersoni</i>	PQ008	IOZCAS	China: Hubei, Shengnongjia	110.68	31.74
<i>N. bukit</i>	ZIN9768 9	ZIN	Viet Nam: Lam Dong, Bidup	108.40	12.10
<i>N. bukit</i>	ZIN9769 0	ZIN	Viet Nam: BiDup- NuiBaNP	108.66	12.16
<i>N. bukit</i>	ZIN9768 1	ZIN	Viet Nam: BiDup- NuiBaNP	108.66	12.16
<i>N. bukit</i>	ZIN9769 4	ZIN	Viet Nam: Lao Cai, Sapa	104.00	22.33
<i>N. bukit</i>	ZIN9769 5	ZIN	Viet Nam: Lam Dong, Bidup	108.40	12.10
<i>N. bukit</i>	ZIN9769 6	ZIN	Viet Nam: Lam Dong, Bidup	108.40	12.10
<i>N. confucianus</i>	WL1402 88	IOZCAS	China: Sichuan, Wenchuan, Wolong Nature Reserve	102.90	30.80
<i>N. confucianus</i>	B006	IOZCAS	China: Gansu, Qiujiaba, Baishuijiang	104.30	32.90
<i>N. confucianus</i>	JHB056	IOZCAS	China: Yunnan, Deqin, Baimang Snow Mountain	99.37	27.63

Species	Field Number	Museums	Locality	Longitude	Latitude
<i>N. confucianus</i>	JHB072	IOZCAS	China: Yunnan, Deqin, Baimang Snow Mountain	99.37	27.63
<i>N. confucianus</i>	JHC578	IOZCAS	China: Yunnan, Deqin, Baimang Snow Mountain	99.37	27.63
<i>N. confucianus</i>	JHD574	IOZCAS	China: Yunnan, Deqin, Baimang Snow Mountain	99.37	27.63
<i>N. confucianus</i>	B111	IOZCAS	China: Gansu, Xigou, Yangnaishan	104.30	32.90
<i>N. confucianus</i>	B112	IOZCAS	China: Gansu, Xigou, Yangnaishan	104.30	32.90
<i>N. confucianus</i>	BJ19016	IOZCAS	China: Beijing, Dongling Mountain	115.20	39.55
<i>N. confucianus</i>	J0094	IOZCAS	China: Yunnan, Jingdong, Ailao Mountain	101.01	24.53
<i>N. gladiusmaculus</i>	YD1804 4	IOZCAS	China, Tibet, Yadong	88.91	27.48
<i>N. gladiusmaculus</i>	YD1804 5	IOZCAS	China, Tibet, Yadong	88.91	27.48
<i>N. gladiusmaculus</i>	YD1806 3	IOZCAS	China, Tibet, Yadong	88.91	27.48
<i>N. gladiusmaculus</i>	YD1806 0	IOZCAS	China: Tibet, Yadong	88.91	27.48
<i>N. lotipes</i>	CQ1829 4	IOZCAS	China: Chongqing, Shizhu, Dafengbao	108.35	30.19
<i>N. lotipes</i>	GZ1401 6	IOZCAS	China: Guizhou, Tongren, Hexi Village	109.21	27.73
<i>N. lotipes</i>	GZ1402 9	IOZCAS	China: Guizhou, Jiangkou, Fanjing Mountain	108.83	27.70
<i>N. lotipes</i>	GD1403 3	IOZCAS	China: Fujian, Guadun, Wuyi Mountain	118.02	27.46
<i>N. lotipes</i>	GD1403 4	IOZCAS	China: Fujian, Guadun, Wuyi Mountain	118.02	27.46
<i>N. lotipes</i>	GD1403 6	IOZCAS	China: Fujian, Guadun, Wuyi Mountain	118.02	27.46
<i>N. niviventer</i>	ZIN9770 4	ZIN	Vietnam: Sapa, Lao Cai	104.00	22.30
<i>N. niviventer</i>	ZIN9770 0	ZIN	Viet Nam, Lao Cai, Sapa	104.00	22.30
<i>N. niviventer</i>	J0095	IOZCAS	China: Yunnan, Jingdong, Ailao Mountain	101.01	24.53
<i>N. pianmaensis</i>	TD2014 0010	IOZCAS	China: Tibet, Seji Mountain	95.01	30.01

Species	Field Number	Museums	Locality	Longitude	Latitude
<i>N. pianmaensis</i>	TD2014 0004	IOZCAS	China: Tibet, Seji Mountain	95.01	30.01
<i>N. pianmaensis</i>	TD2014 0005	IOZCAS	China: Tibet, Seji Mountain	95.01	30.01
<i>N. pianmaensis</i>	TD2014 0006	IOZCAS	China: Tibet, Seji Mountain	95.01	30.01
<i>N. pianmaensis</i>	TD2014 0011	IOZCAS	China: Tibet, Seji Mountain	95.01	30.01
<i>N. sacer</i>	S4891	Shandong University	China:Shandong, Yantai,Aishan	120.77	37.41
<i>N. sacer</i>	S4892	Shandong University	China:Shandong, Yantai,Aishan	120.77	37.41
<i>N. sacer</i>	S4893	Shandong University	China:Shandong, Yantai,Aishan	120.77	37.41
<i>N. sacer</i>	S4894	Shandong University	China:Shandong, Yantai,Aishan	120.77	37.41
<i>N. sacer</i>	S4895	Shandong University	China:Shandong, Yantai,Aishan	120.77	37.41
<i>N. sacer</i>	S4896	Shandong University	China:Shandong, Yantai,Aishan	120.77	37.41
<i>N. tenaster</i>	ZIN9768 6	ZIN	Viet Nam: Lam Dong, Bidup	108.40	12.10
<i>N. tenaster</i>	ZIN9768 7	ZIN	Viet Nam: Lam Dong, Bidup	108.40	12.10
<i>N. tenaster</i>	ZIN9768 8	ZIN	Viet Nam: Lam Dong, Bidup	108.40	12.10
<i>N. tenaster</i>	ZIN9769 3	ZIN	Viet Nam: Lam Dong, Bidup	108.40	12.10

Supplementary Table S4. Collection information of samples used for whole-genome sequencing.

Supplementary Table S4 is listed as a separate Excel file due to its large size

Supplementary Table S5. Gene enrichment analysis of highly differentiated genes between *N. confucianus* and *N. sacer* by F_{ST} .

Term	Number of genes	P value	P value cutoff	Description
GO:0007186	79	7.08E-13	1.03E-08	G protein-coupled receptor signaling pathway
GO:0003008	91	2.46E-11	1.79E-07	System process
GO:0051606	57	2.63E-10	1.28E-06	Detection of stimulus
GO:0009593	52	8.54E-10	3.11E-06	Detection of chemical stimulus
GO:0050877	74	1.34E-09	3.89E-06	Nervous system process
GO:0050906	47	1.72E-09	4.18E-06	Detection of stimulus involved in sensory perception
GO:0007600	60	1.96E-08	3.57E-05	Sensory perception
GO:0007608	42	2.90E-08	4.31E-05	Sensory perception of smell
GO:0042221	135	2.66E-08	4.31E-05	Response to chemical
GO:0050907	42	3.83E-08	5.07E-05	Detection of chemical stimulus involved in sensory perception
GO:0007154	138	9.82E-08	0.00012	Cell communication
GO:0023052	135	1.36E-07	0.00015	Signaling
GO:0007165	128	2.91E-07	0.00028	Signal transduction
GO:0050896	192	1.86E-06	0.0017	Response to stimulus
GO:0032501	173	2.05E-06	0.0018	Multicellular organismal process
GO:0051716	160	2.30E-06	0.0019	Cellular response to stimulus
GO:0006874	21	4.57E-05	0.035	Cellular calcium ion homeostasis

Supplementary Table S6. Gene enrichment analysis of highly differentiated genes between *N. confucianus* and *N. gladiusmaculus* by *F_{ST}*.

Term	Number of genes	P value	P value cutoff	Description
GO:0007186	82	4.02E-24	5.85E-20	G protein-coupled receptor signaling pathway
GO:0009593	61	9.32E-22	6.79E-18	Detection of chemical stimulus
GO:0051606	62	4.75E-20	2.31E-16	Detection of stimulus
GO:0050907	52	1.57E-19	5.72E-16	Detection of chemical stimulus involved in sensory perception
GO:0007600	67	5.44E-19	1.58E-15	Sensory perception
GO:0050906	53	6.87E-19	1.67E-15	Detection of stimulus involved in sensory perception
GO:0007608	49	1.41E-17	2.57E-14	Sensory perception of smell
GO:0050877	72	1.74E-16	2.81E-13	Nervous system process
GO:0007154	120	1.67E-13	2.21E-10	Cell communication
GO:0023052	118	1.98E-13	2.40E-10	Signaling
GO:0007165	113	3.95E-13	4.43E-10	Signal transduction
GO:0003008	75	4.92E-13	5.12E-10	System process
GO:0042221	110	4.93E-11	4.79E-08	Response to chemical
GO:0051716	133	1.05E-10	9.54E-08	Cellular response to stimulus
GO:0050896	149	1.64E-08	1.40E-05	Response to stimulus
GO:0019236	13	3.48E-07	0.00028	Response to pheromone
GO:0032501	129	1.44E-06	0.0011	Multicellular organismal process
GO:0050789	179	1.05E-05	0.0077	Regulation of biological process
GO:0050794	171	4.07E-05	0.0282	Regulation of cellular process
GO:0065007	183	7.20E-05	0.0477	Biological regulation
GO:0045925	7	7.79E-05	0.0493	Positive regulation of female receptivity

Supplementary Table S7. Gene enrichment analysis of highly differentiated genes between *N. confucianus* and *N. pianmaensis* by F_{ST} .

Term	Number of genes	P value	P value cutoff	Description
GO:0007186	60	4.65E-21	6.77E-17	G protein-coupled receptor signaling pathway
GO:0007600	52	9.34E-19	5.69E-15	Sensory perception
GO:0009593	45	7.82E-19	5.69E-15	Detection of chemical stimulus
GO:0051606	47	1.65E-18	6.01E-15	Detection of stimulus
GO:0007606	41	5.82E-18	1.70E-14	Sensory perception of chemical stimulus
GO:0050907	39	2.50E-17	6.07E-14	Detection of chemical stimulus involved in sensory perception
GO:0050906	40	4.63E-17	9.63E-14	Detection of stimulus involved in sensory perception
GO:0007608	38	1.14E-16	2.08E-13	Sensory perception of smell
GO:0050877	54	1.15E-15	1.86E-12	Nervous system process
GO:0003008	57	2.19E-13	3.19E-10	System process
GO:0007165	76	3.38E-10	4.10E-07	Signal transduction
GO:0023052	78	7.58E-10	8.49E-07	Signaling
GO:0007154	79	9.15E-10	9.52E-07	Cell communication
GO:0042221	72	6.53E-08	6.34E-05	Response to chemical
GO:0051716	81	1.14E-05	0.0103	Cellular response to stimulus
GO:0032501	86	2.19E-05	0.0188	Multicellular organismal process

Supplementary Table S8. Gene enrichment analysis of highly differentiated genes between *N. lotipes* and *N. sacer* by F_{ST} .

Term	Number of genes	P value	P-value cutoff	Description
GO:0050909	8	1.87E-06	0.0199	Sensory perception of taste

Supplementary Table S9. Gene enrichment analysis of highly differentiated genes between *N. lotipes* and *N. pianmaensis* by F_{ST} .

Term	Number of genes	P value	P value cutoff	Description
GO:0050906	89	2.06E-38	2.14E-34	Detection of stimulus involved in sensory perception
GO:0051606	100	1.47E-38	2.14E-34	Detection of stimulus
GO:0009593	94	8.80E-38	4.27E-34	Detection of chemical stimulus
GO:0050907	85	1.89E-37	6.89E-34	Detection of chemical stimulus involved in sensory perception
GO:0007186	115	2.96E-35	7.18E-32	G protein-coupled receptor signaling pathway
GO:0007600	104	2.03E-34	4.22E-31	Sensory perception
GO:0007608	76	1.46E-30	2.67E-27	Sensory perception of smell
GO:0050877	108	2.23E-28	3.62E-25	Nervous system process
GO:0003008	112	8.17E-23	1.08E-19	System process
GO:0007165	154	2.64E-18	3.21E-15	Signal transduction
GO:0023052	158	1.41E-17	1.58E-14	Signaling
GO:0007154	159	5.47E-17	5.69E-14	Cell communication
GO:0042221	151	8.48E-16	8.24E-13	Response to chemical
GO:0051716	176	3.16E-13	2.88E-10	Cellular response to stimulus
GO:0050896	202	7.08E-12	6.07E-09	Response to stimulus
GO:0032501	178	6.39E-10	5.17E-07	Multicellular organismal process
GO:0019236	17	8.79E-09	6.74E-06	Response to pheromone
GO:0001580	9	5.40E-08	3.93E-05	Detection of chemical stimulus involved in sensory perception of bitter taste
GO:0065007	245	3.02E-06	0.0019	Biological regulation
GO:0050794	227	4.35E-06	0.0025	Regulation of cellular process
GO:0050789	234	6.07E-06	0.0034	Regulation of biological process
GO:0045925	8	7.34E-05	0.0396	Positive regulation of female receptivity

Supplementary Table S10. List of genes in the selected overlapping regions by top 1% value of F_{ST} between widespread species and narrow-ranged species.

Gene Symbol	Description	Start	End	Chr
<i>LOC100360184</i>	splicing factor proline and glutamine rich, pseudogene 1	5 160 758	5 190 666	13
<i>LOC100360923</i>	SET and MYND domain containing 3, pseudogene 1	15 044 608	15 045 633	13
<i>LOC100362382</i>	coiled-coil domain containing 28A, pseudogene 1	15 932 178	15 932 178	13
<i>LOC100911899</i>	basic transcription factor 3, pseudogene 3	17 238 270	17 239 523	13
<i>LOC102549704</i>	heat shock protein 90 alpha family class A member 1, pseudogene 11	6 557 326	6 558 091	13
<i>LOC102553684</i>	eukaryotic translation initiation factor 4A1, pseudogene 1	12 511 967	12 513 501	13
<i>LOC102555474</i>	uncharacterized LOC102555474	6 548 034	6 553 218	13
<i>LOC103691598</i>	methionine adenosyltransferase 2 subunit beta pseudogene	14 836 035	14 836 975	13
<i>LOC120096213</i>	solute carrier family 25 member 36, pseudogene 2	5 082 016	5 160 317	13
<i>LOC120096228</i>	DnaJ heat shock protein family (Hsp40) member C14, pseudogene 1	17 271 476	17 273 698	13
<i>LOC120096412</i>	small nucleolar RNA SNORA17	12 240 849	12 240 975	13
<i>LOC120096444</i>	U6 spliceosomal RNA	15 863 928	15 864 034	13
<i>LOC120101196</i>	U6 spliceosomal RNA	248 573 434	248 573 534	13
<i>LOC301971</i>	kinesin family member 13A, pseudogene 1	16 017 134	16 021 538	13
<i>LOC304725</i>	similar to contactin associated protein-like 5	11 853 761	12 864 307	13
<i>LOC679594</i>	similar to polyubiquitin	11 802 998	11 803 461	13
<i>LOC679645</i>	prohibitin 1, pseudogene 16	13 695 332	13 696 148	13
<i>LOC679734</i>	ribosomal protein S4, X-linked, pseudogene 11	15 340 489	15 341 938	13
<i>LOC682479</i>	Josephin domain containing 1, pseudogene 1	14 699 316	14 699 912	13
<i>RGD1561440</i>	similar to nemo like kinase	15 934 536	15 938 158	13
<i>Hspd1-ps8</i>	heat shock protein family D (Hsp60) member 1, pseudogene 8	14 044 309	14 046 528	13
<i>SYN3</i>	synapsin III	16 216 055	17 808 790	7

Supplementary Table S11. List of genes in the selected overlapping regions by top 1% value of π ratio between widespread species and narrow-ranged species.

Gene Symbol	Description	Start	End	Chr
<i>AGBL1</i>	AGBL carboxypeptidase 1	130 043 914	130 950 739	1
<i>AGBL4</i>	AGBL carboxypeptidase 4	125 254 963	126 534 367	5
<i>BEND5</i>	BEN domain containing 5	126 290 648	126 336 662	5
<i>CACNA1C</i>	calcium voltage-gated channel subunit alpha1 C	151 764 138	152 379 454	4
<i>CTNNA3</i>	catenin alpha 3	23 614 469	25 200 026	20
<i>DAB1</i>	DAB adaptor protein 1	118 392 953	119 513 625	5
<i>GLRA3</i>	glycine receptor, alpha 3	34 205 431	34 848 332	16
<i>HSPD1-PS8</i>	heat shock protein family D (Hsp60) member 1, pseudogene 8	14 044 309	14 046 528	13
<i>IRS2</i>	insulin receptor substrate 2	78 488 249	78 512 482	16
<i>LOC100362382</i>	coiled-coil domain containing 28A, pseudogene 1	15 932 178	15 932 178	13
<i>LOC100911899</i>	basic transcription factor 3, pseudogene 3	17 238 270	17 239 523	13
<i>LOC102553684</i>	eukaryotic translation initiation factor 4A1, pseudogene 1	12 511 967	12 513 501	13
<i>LOC103691598</i>	methionine adenosyltransferase 2 subunit beta pseudogene	14 836 035	14 836 975	13
<i>LOC103692449</i>	uncharacterized protein-like	119 140 608	119 141 297	5
<i>LOC103692937</i>	t-SNARE domain containing 1	106 226 056	106 407 308	7
<i>LOC100360923</i>	SET and MYND domain containing 3, pseudogene 1	15 044 608	15 045 633	13
<i>LOC120096215</i>	ORMDL sphingolipid biosynthesis regulator 1, pseudogene 6	16 532 418	16 538 949	13
<i>LOC120096412</i>	small nucleolar RNA SNORA17	12 240 849	12 240 975	13
<i>LOC120096416</i>	small nucleolar RNA SNORA17	1 056 334	1 056 453	13
<i>LOC120096444</i>	U6 spliceosomal RNA	15 863 928	15 864 034	13
<i>LOC120102312</i>	family with sequence similarity 50, member A, pseudogene 1	106 608 389	106 609 566	4
<i>LOC304725</i>	similar to contactin associated protein- like 5	11 853 761	12 864 307	13
<i>LOC679645</i>	prohibitin 1, pseudogene 16	13 695 332	13 696 148	13
<i>LOC679734</i>	ribosomal protein S4, X-linked, pseudogene 11	15 340 489	15 341 938	13
<i>LOC682479</i>	Josephin domain containing 1, pseudogene 1	14 699 316	14 699 912	13
<i>LINGO1</i>	leucine rich repeat and Ig domain containing 1	57 011 272	57 193 496	8
<i>MACROD2</i>	mono-ADP ribosylhydrolase 2	127 720 066	129 737 511	3
<i>MAP1B</i>	microtubule-associated protein 1B	30 817 261	30 910 458	2

Gene Symbol	Description	Start	End	Chr
<i>NCAM1</i>	neural cell adhesion molecule 1	49 865 629	50 165 687	8
<i>NTM</i>	neurotrimin	27 376 582	28 366 604	8
<i>NTRK3</i>	neurotrophic receptor tyrosine kinase 3	132 116 472	132 503 849	1
<i>PIEZO2</i>	piezo-type mechanosensitive ion channel component 2	56 468 449	56 844 984	18
<i>PLXNA4</i>	plexin A4	60 720 246	61 162 206	4
<i>RGD1561440</i>	similar to nemo like kinase	15 934 536	15 938 158	13
<i>ROBO1</i>	roundabout guidance receptor 1	10 580 863	11 621 672	11
<i>SMARCA2</i>	SWI/SNF related, matrix associated, actin dependent regulator of chromatin, subfamily a, member 2	224 191 125	224 358 640	1
<i>TP63</i>	tumor protein p63	74 838 858	75 049 764	11

Supplementary Table S12. Gene enrichment analysis of Highly differentiated genes between *N. lotipes* and *N. niviventer* by π ratio.

Term	Number of genes	P value	P value cutoff	Description
GO:0003002	46	2.09E-14	3.04E-10	Regionalization
GO:0009952	36	8.11E-14	5.90E-10	Anterior/posterior pattern specification
GO:0009887	82	3.31E-13	1.61E-09	Animal organ morphogenesis
GO:0007389	49	1.06E-12	3.87E-09	Pattern specification process
GO:0048568	53	1.21E-12	3.87E-09	Embryonic organ development
GO:0048706	27	2.52E-12	6.11E-09	Embryonic skeletal system development
GO:0007417	84	3.48E-12	7.24E-09	Central nervous system development
GO:0048731	232	3.56E-12	7.24E-09	System development
GO:0001501	51	6.91E-12	1.12E-08	Skeletal system development
GO:0048704	23	1.99E-11	2.90E-08	Embryonic skeletal system morphogenesis
GO:0032502	280	2.51E-11	3.32E-08	Developmental process
GO:0048513	183	3.09E-11	3.75E-08	Animal organ development
GO:0007399	143	3.72E-11	4.17E-08	Nervous system development
GO:0009790	86	4.36E-11	4.53E-08	Embryo development
GO:0048598	58	4.47E-11	4.53E-08	Embryonic morphogenesis
GO:0009653	130	1.98E-10	1.80E-07	Anatomical structure morphogenesis
GO:0007275	248	2.14E-10	1.83E-07	Multicellular organism development
GO:0048856	259	4.63E-10	3.75E-07	Anatomical structure development
GO:0060322	68	6.38E-10	4.89E-07	Head development
GO:0043009	63	8.57E-10	6.24E-07	Chordate embryonic development
GO:0007420	65	1.09E-09	7.57E-07	Brain development
GO:0048562	36	1.28E-09	8.46E-07	Embryonic organ morphogenesis
GO:0022008	109	1.90E-09	1.19E-06	Neurogenesis
GO:0048699	102	4.53E-09	2.64E-06	Generation of neurons
GO:0050793	143	5.57E-09	3.12E-06	Regulation of developmental process
GO:0048705	30	8.10E-09	4.37E-06	Skeletal system morphogenesis
GO:0030182	73	2.00E-08	1.04E-05	Neuron differentiation
GO:0051239	161	2.88E-08	1.45E-05	Regulation of multicellular organismal process
GO:0051960	70	6.03E-08	2.93E-05	Regulation of nervous system development
GO:0002009	43	6.29E-08	2.96E-05	Morphogenesis of an epithelium

Supplementary TableS13. Gene enrichment analysis of highly differentiated genes between *N. confucianus* and *N. gladiusmaculus* by π ratio.

Term	Number of genes	P value	P value cutoff	Description
GO:0048731	223	3.13E-20	4.56E-16	System development
GO:0007275	241	1.85E-19	1.09E-15	Multicellular organism development
GO:0007399	146	1.95E-19	1.09E-15	Nervous system development
GO:0032502	264	3.22E-19	1.09E-15	Developmental process
GO:0048856	252	1.50E-19	1.09E-15	Anatomical structure development
GO:0007155	74	7.49E-18	1.82E-14	Cell adhesion
GO:0051239	167	2.30E-17	4.19E-14	Regulation of multicellular organismal process
GO:2000026	126	9.80E-17	1.59E-13	Regulation of multicellular organismal development
GO:0022008	112	5.52E-16	8.03E-13	Neurogenesis
GO:0048699	106	1.14E-15	1.51E-12	Generation of neurons
GO:0048666	70	2.04E-15	2.47E-12	Neuron development
GO:0048869	183	2.16E-15	2.47E-12	Cellular developmental process
GO:0030154	180	4.25E-15	4.42E-12	Cell differentiation
GO:0048468	106	6.25E-15	6.07E-12	Cell development
GO:0000902	63	7.56E-15	6.88E-12	Cell morphogenesis
GO:0030182	79	7.89E-15	6.88E-12	Neuron differentiation
GO:0034330	50	1.40E-14	1.13E-11	Cell junction organization
GO:0050793	140	1.82E-14	1.40E-11	Regulation of developmental process
GO:0009653	123	3.44E-14	2.51E-11	Anatomical structure morphogenesis
GO:0007417	78	3.71E-14	2.58E-11	Central nervous system development
GO:0051960	76	4.01E-14	2.66E-11	Regulation of nervous system development
GO:0048513	162	6.85E-13	4.34E-10	Animal organ development
GO:0051240	106	1.08E-12	6.53E-10	Positive regulation of multicellular organismal process
GO:0031175	57	1.49E-12	8.39E-10	Neuron projection development
GO:0045595	105	1.56E-12	8.39E-10	Regulation of cell differentiation
GO:0050804	48	1.44E-12	8.39E-10	Modulation of chemical synaptic transmission
GO:0032501	294	1.97E-12	9.91E-10	Multicellular organismal process
GO:0051094	90	4.37E-12	2.12E-09	Positive regulation of developmental process
GO:0010646	154	8.71E-12	4.09E-09	Regulation of cell communication
GO:0098742	31	9.35E-12	4.26E-09	Cell-cell adhesion via plasma-membrane adhesion molecules

Supplementary Table S14. Gene enrichment analysis of highly differentiated genes between *N. confucianus* and *N. pianmaensis* by π ratio.

Term	Number of genes	P value	P value cutoff	Description
GO:0048731	203	9.11E-19	6.76E-15	System development
GO:0048856	232	4.64E-19	6.76E-15	Anatomical structure development
GO:0007275	219	6.15E-18	2.99E-14	Multicellular organism development
GO:0032502	240	9.33E-18	3.40E-14	Developmental process
GO:0007399	131	3.15E-17	9.18E-14	Nervous system development
GO:0030154	173	3.73E-17	9.18E-14	Cell differentiation
GO:0048468	104	5.24E-17	1.09E-13	Cell development
GO:0048869	174	7.96E-17	1.45E-13	Cellular developmental process
GO:0048699	101	1.93E-16	3.12E-13	Generation of neurons
GO:0022008	104	1.16E-15	1.69E-12	Neurogenesis
GO:0051239	150	2.19E-15	2.90E-12	Regulation of multicellular organismal process
GO:0045595	105	2.71E-15	3.29E-12	Regulation of cell differentiation
GO:0048513	157	4.17E-15	4.67E-12	Animal organ development
GO:0050793	131	1.05E-14	1.10E-11	Regulation of developmental process
GO:0032879	136	2.01E-14	1.95E-11	Regulation of localization
GO:0048666	64	2.04E-14	1.95E-11	Neuron development
GO:0051960	72	2.08E-14	1.95E-11	Regulation of nervous system development
GO:0030182	73	3.01E-14	2.43E-11	Neuron differentiation
GO:2000026	111	4.50E-14	3.45E-11	Regulation of multicellular organismal development
GO:0007155	61	3.13E-13	2.28E-10	Cell adhesion
GO:0009653	112	3.45E-13	2.39E-10	Anatomical structure morphogenesis
GO:0060284	70	4.40E-13	2.91E-10	Regulation of cell development
GO:0006928	83	4.74E-13	3.00E-10	Movement of cell or subcellular component
GO:0040011	76	8.80E-13	5.13E-10	Locomotion
GO:0050767	63	2.17E-12	1.22E-09	Regulation of neurogenesis
GO:0031175	53	3.35E-12	1.81E-09	Neuron projection development
GO:0120035	56	5.56E-12	2.89E-09	Regulation of plasma membrane bounded cell projection organization
GO:0050808	33	7.31E-12	3.67E-09	Synapse organization
GO:0045664	55	8.16E-12	3.90E-09	Regulation of neuron differentiation
GO:0050804	44	8.03E-12	3.90E-09	Modulation of chemical synaptic transmission

Supplementary Table S15. Gene enrichment analysis of highly differentiated genes between *N. confucianus* and *N. niviventer* by π ratio.

Term	Number of genes	P value	P value cutoff	Description
GO:0048731	210	1.29E-13	1.88E-09	System development
GO:0032502	253	4.29E-13	3.13E-09	Developmental process
GO:0007275	223	1.36E-11	6.61E-08	Multicellular organism development
GO:0048856	232	4.03E-11	1.47E-07	Anatomical structure development
GO:0048513	161	6.03E-11	1.76E-07	Animal organ development
GO:0007399	126	8.69E-11	2.11E-07	Nervous system development
GO:0007417	71	2.67E-10	5.55E-07	Central nervous system development
GO:0051239	148	9.62E-10	1.75E-06	Regulation of multicellular organismal process
GO:0022008	96	4.36E-09	7.06E-06	Neurogenesis
GO:0050793	127	4.67E-09	7.06E-06	Regulation of developmental process
GO:0001501	40	1.20E-08	1.59E-05	Skeletal system development
GO:0048706	20	1.39E-08	1.69E-05	Embryonic skeletal system development
GO:0003002	32	1.89E-08	2.00E-05	Regionalization
GO:0009653	109	1.78E-08	2.00E-05	Anatomical structure morphogenesis
GO:0009952	25	2.17E-08	2.11E-05	Anterior/posterior pattern specification
GO:0009887	62	2.35E-08	2.14E-05	Animal organ morphogenesis
GO:0048699	88	3.66E-08	3.13E-05	Generation of neurons
GO:0051960	62	1.07E-07	8.64E-05	Regulation of nervous system development
GO:0007389	35	1.19E-07	8.97E-05	Pattern specification process
GO:0098742	25	1.17E-07	8.97E-05	Cell-cell adhesion via plasma-membrane adhesion molecules
GO:0030182	63	1.38E-07	9.02E-05	Neuron differentiation
GO:0032990	39	1.30E-07	9.02E-05	Cell part morphogenesis
GO:0048812	37	1.33E-07	9.02E-05	Neuron projection morphogenesis
GO:0031175	47	1.74E-07	1.00E-04	Neuron projection development
GO:0048869	160	1.73E-07	1.00E-04	Cellular developmental process
GO:0010646	142	2.74E-07	0.00013	Regulation of cell communication
GO:0030154	157	2.79E-07	0.00013	Cell differentiation
GO:0032879	126	2.94E-07	0.00013	Regulation of localization
GO:0034330	37	2.45E-07	0.00013	Cell junction organization
GO:0048704	16	2.63E-07	0.00013	Embryonic skeletal system morphogenesis

Supplementary Table S16. Gene enrichment analysis of highly differentiated genes between *N. lotipes* and *N. sacer* by π ratio.

Term	Number of genes	P value	P value cutoff	Description
GO:0048731	223	6.59E-20	9.60E-16	System development
GO:0007275	241	4.07E-19	2.97E-15	Multicellular organism development
GO:0007399	142	1.22E-17	5.91E-14	Nervous system development
GO:0048856	246	3.03E-17	1.10E-13	Anatomical structure development
GO:0032502	257	1.26E-16	3.66E-13	Developmental process
GO:0051270	79	1.34E-15	3.24E-12	Regulation of cellular component movement
GO:0048869	184	1.80E-15	3.74E-12	Cellular developmental process
GO:0051239	162	2.13E-15	3.89E-12	Regulation of multicellular organismal process
GO:0030154	181	3.51E-15	5.68E-12	Cell differentiation
GO:0022008	109	1.24E-14	1.81E-11	Neurogenesis
GO:0030334	70	2.01E-14	2.67E-11	Regulation of cell migration
GO:0048468	105	2.21E-14	2.69E-11	Cell development
GO:0030182	78	2.99E-14	3.34E-11	Neuron differentiation
GO:0032879	146	3.60E-14	3.75E-11	Regulation of localization
GO:0040012	74	4.11E-14	3.91E-11	Regulation of locomotion
GO:2000145	72	4.03E-14	3.91E-11	Regulation of cell motility
GO:0007417	78	4.91E-14	4.21E-11	Central nervous system development
GO:0006928	90	1.88E-13	1.52E-10	Movement of cell or subcellular component
GO:0048666	66	2.32E-13	1.78E-10	Neuron development
GO:0048513	164	2.68E-13	1.96E-10	Animal organ development
GO:0050793	137	2.88E-13	2.00E-10	Regulation of developmental process
GO:0040011	82	4.99E-13	3.30E-10	Locomotion
GO:0048699	99	8.97E-13	5.68E-10	Generation of neurons
GO:0007155	64	9.75E-13	5.92E-10	Cell adhesion
GO:2000026	115	1.68E-12	9.80E-10	Regulation of multicellular organismal development
GO:0009653	118	2.78E-12	1.50E-09	Anatomical structure morphogenesis
GO:0007166	102	5.28E-12	2.74E-09	Cell surface receptor signaling pathway
GO:0030900	44	6.96E-12	3.50E-09	Forebrain development
GO:0031175	55	1.68E-11	8.17E-09	Neuron projection development
GO:0007420	60	6.21E-11	2.92E-08	Brain development

Supplementary Table S17. Gene enrichment analysis of highly differentiated genes between *N. lotipes* and *N. gladiusmaculus* by π ratio.

Term	Number of genes	P value	P value cutoff	Description
GO:0048731	249	2.77E-23	4.03E-19	System development
GO:0032502	296	9.89E-23	7.20E-19	Developmental process
GO:0007399	164	1.72E-22	8.36E-19	Nervous system development
GO:0007275	268	4.20E-22	1.34E-18	Multicellular organism development
GO:0048856	280	3.68E-22	1.34E-18	Anatomical structure development
GO:0051239	191	1.62E-21	3.92E-18	Regulation of multicellular organismal process
GO:2000026	141	4.20E-19	8.75E-16	Regulation of multicellular organismal development
GO:0050793	160	8.67E-18	1.58E-14	Regulation of developmental process
GO:0007155	78	1.31E-17	2.13E-14	Cell adhesion
GO:0048869	204	1.50E-17	2.19E-14	Cellular developmental process
GO:0030154	201	2.54E-17	3.36E-14	Cell differentiation
GO:0022008	121	1.86E-16	2.09E-13	Neurogenesis
GO:0048513	185	4.55E-16	4.73E-13	Animal organ development
GO:0048699	114	6.10E-16	5.93E-13	Generation of neurons
GO:0051960	85	6.15E-16	5.93E-13	Regulation of nervous system development
GO:0045595	121	1.37E-15	1.18E-12	Regulation of cell differentiation
GO:0009653	134	6.67E-15	5.39E-12	Anatomical structure morphogenesis
GO:0007417	84	1.53E-14	1.17E-11	Central nervous system development
GO:0000902	66	1.97E-14	1.43E-11	Cell morphogenesis
GO:0032501	327	2.41E-14	1.67E-11	Multicellular organismal process
GO:0034330	52	4.18E-14	2.77E-11	Cell junction organization
GO:0048468	110	1.17E-13	7.41E-11	Cell development
GO:0051240	116	1.61E-13	9.79E-11	Positive regulation of multicellular organismal process
GO:0060284	80	2.75E-13	1.60E-10	Regulation of cell development
GO:0050804	52	3.55E-13	1.99E-10	Modulation of chemical synaptic transmission
GO:0045664	65	4.28E-13	2.23E-10	Regulation of neuron differentiation
GO:0030182	80	4.70E-13	2.32E-10	Neuron differentiation
GO:0050767	73	4.61E-13	2.32E-10	Regulation of neurogenesis
GO:0048666	68	1.76E-12	8.28E-10	Neuron development
GO:0010646	168	2.51E-12	1.14E-09	Regulation of cell communication

Supplementary Table S18. Gene enrichment analysis of highly differentiated genes between *N. lotipes* and *N. pianmaensis* by π ratio.

Term	Number of genes	P value	P value cutoff	Description
GO:0048731	223	3.70E-18	4.74E-14	System development
GO:0048856	255	3.25E-18	4.74E-14	Anatomical structure development
GO:0007275	242	1.38E-17	6.17E-14	Multicellular organism development
GO:0007399	145	1.27E-17	6.17E-14	Nervous system development
GO:0032502	264	7.57E-17	2.21E-13	Developmental process
GO:0048468	113	1.07E-16	2.59E-13	Cell development
GO:0051239	169	1.59E-16	3.30E-13	Regulation of multicellular organismal process
GO:0045595	118	1.97E-16	3.58E-13	Regulation of cell differentiation
GO:0022008	115	4.38E-16	7.09E-13	Neurogenesis
GO:0030154	188	4.40E-16	7.09E-13	Cell differentiation
GO:0048699	109	7.71E-16	1.02E-12	Generation of neurons
GO:0048869	189	1.05E-15	1.27E-12	Cellular developmental process
GO:0050793	147	1.29E-15	1.45E-12	Regulation of developmental process
GO:0051960	81	1.31E-15	1.45E-12	Regulation of nervous system development
GO:0045664	66	8.37E-15	8.13E-12	Regulation of neuron differentiation
GO:0010975	57	2.51E-14	2.29E-11	Regulation of neuron projection development
GO:0048513	171	2.77E-14	2.37E-11	Animal organ development
GO:0060284	79	2.94E-14	2.38E-11	Regulation of cell development
GO:0031344	66	3.69E-14	2.83E-11	Regulation of cell projection organization
GO:2000026	122	4.59E-14	3.35E-11	Regulation of multicellular organismal development
GO:0050767	72	6.47E-14	4.33E-11	Regulation of neurogenesis
GO:0120035	65	6.25E-14	4.33E-11	Regulation of plasma membrane bounded cell projection organization
GO:0051962	57	1.82E-13	1.15E-10	Positive regulation of nervous system development
GO:0030182	77	3.80E-13	2.30E-10	Neuron differentiation
GO:0006928	91	4.08E-13	2.38E-10	Movement of cell or subcellular component
GO:0048666	66	8.83E-13	4.95E-10	Neuron development
GO:0009653	122	9.54E-13	5.00E-10	Anatomical structure morphogenesis
GO:0040011	83	9.27E-13	5.00E-10	Locomotion
GO:0031346	47	1.14E-12	5.74E-10	Positive regulation of cell projection organization
GO:0045597	76	1.44E-12	7.01E-10	Positive regulation of cell differentiation

Supplementary Table S19. Gene enrichment analysis of Highly differentiated genes between *N. lotipes* and *N. niviventer* by π ratio.

Term	Number of genes	P value	P value cutoff	Description
GO:0003002	46	2.09E-14	3.04E-10	Regionalization
GO:0009952	36	8.11E-14	5.90E-10	Anterior/posterior pattern specification
GO:0009887	82	3.31E-13	1.61E-09	Animal organ morphogenesis
GO:0007389	49	1.06E-12	3.87E-09	Pattern specification process
GO:0048568	53	1.21E-12	3.87E-09	Embryonic organ development
GO:0048706	27	2.52E-12	6.11E-09	Embryonic skeletal system development
GO:0007417	84	3.48E-12	7.24E-09	Central nervous system development
GO:0048731	232	3.56E-12	7.24E-09	System development
GO:0001501	51	6.91E-12	1.12E-08	Skeletal system development
GO:0048704	23	1.99E-11	2.90E-08	Embryonic skeletal system morphogenesis
GO:0032502	280	2.51E-11	3.32E-08	Developmental process
GO:0048513	183	3.09E-11	3.75E-08	Animal organ development
GO:0007399	143	3.72E-11	4.17E-08	Nervous system development
GO:0009790	86	4.36E-11	4.53E-08	Embryo development
GO:0048598	58	4.47E-11	4.53E-08	Embryonic morphogenesis
GO:0009653	130	1.98E-10	1.80E-07	Anatomical structure morphogenesis
GO:0007275	248	2.14E-10	1.83E-07	Multicellular organism development
GO:0048856	259	4.63E-10	3.75E-07	Anatomical structure development
GO:0060322	68	6.38E-10	4.89E-07	Head development
GO:0043009	63	8.57E-10	6.24E-07	Chordate embryonic development
GO:0007420	65	1.09E-09	7.57E-07	Brain development
GO:0048562	36	1.28E-09	8.46E-07	Embryonic organ morphogenesis
GO:0022008	109	1.90E-09	1.19E-06	Neurogenesis
GO:0048699	102	4.53E-09	2.64E-06	Generation of neurons
GO:0050793	143	5.57E-09	3.12E-06	Regulation of developmental process
GO:0048705	30	8.10E-09	4.37E-06	Skeletal system morphogenesis
GO:0030182	73	2.00E-08	1.04E-05	Neuron differentiation
GO:0051239	161	2.88E-08	1.45E-05	Regulation of multicellular organismal process
GO:0051960	70	6.03E-08	2.93E-05	Regulation of nervous system development
GO:0002009	43	6.29E-08	2.96E-05	Morphogenesis of an epithelium
GO:0048522	243	4.99E-06	0.0013	Positive regulation of cellular process

Supplementary Table S20. list of genes in the selected overlapping regions by top 1% value of F_{ST} and π ratio between widespread species and narrow-ranged species.

Gene Symbol	Description	Start	End	Chr
<i>LOC100362382</i>	coiled-coil domain containing 28A, pseudogene 1	15 932 178	15 932 178	13
<i>LOC100911899</i>	basic transcription factor 3, pseudogene 3	17 238 270	17 239 523	13
<i>LOC102553684</i>	eukaryotic translation initiation factor 4A1, pseudogene 1	12 511 967	12 513 501	13
<i>LOC103691598</i>	methionine adenosyltransferase 2 subunit beta pseudogene	14 836 035	14 836 975	13
<i>LOC100360923</i>	SET and MYND domain containing 3, pseudogene 1	15 044 608	15 045 633	13
<i>LOC120096412</i>	small nucleolar RNA SNORA17	12 240 849	12 240 975	13
<i>LOC120096444</i>	U6 spliceosomal RNA	15 863 928	15 864 034	13
<i>LOC304725</i>	ribosomal protein S4, X-linked, pseudogene 11	15 340 489	15 341 938	13
<i>LOC679645</i>	prohibitin 1, pseudogene 16	13 695 332	13 696 148	13
<i>LOC679734</i>	similar to contactin associated protein-like 5	11 853 761	12 864 307	13
<i>LOC682479</i>	Josephin domain containing 1, pseudogene 1	14 699 316	14 699 912	13
<i>Hspd1-ps8</i>	heat shock protein family D (Hsp60) member 1, pseudogene 8	14 044 309	14 046 528	13
<i>RGD1561440</i>	similar to nemo like kinase	15 934 536	15 938 158	13