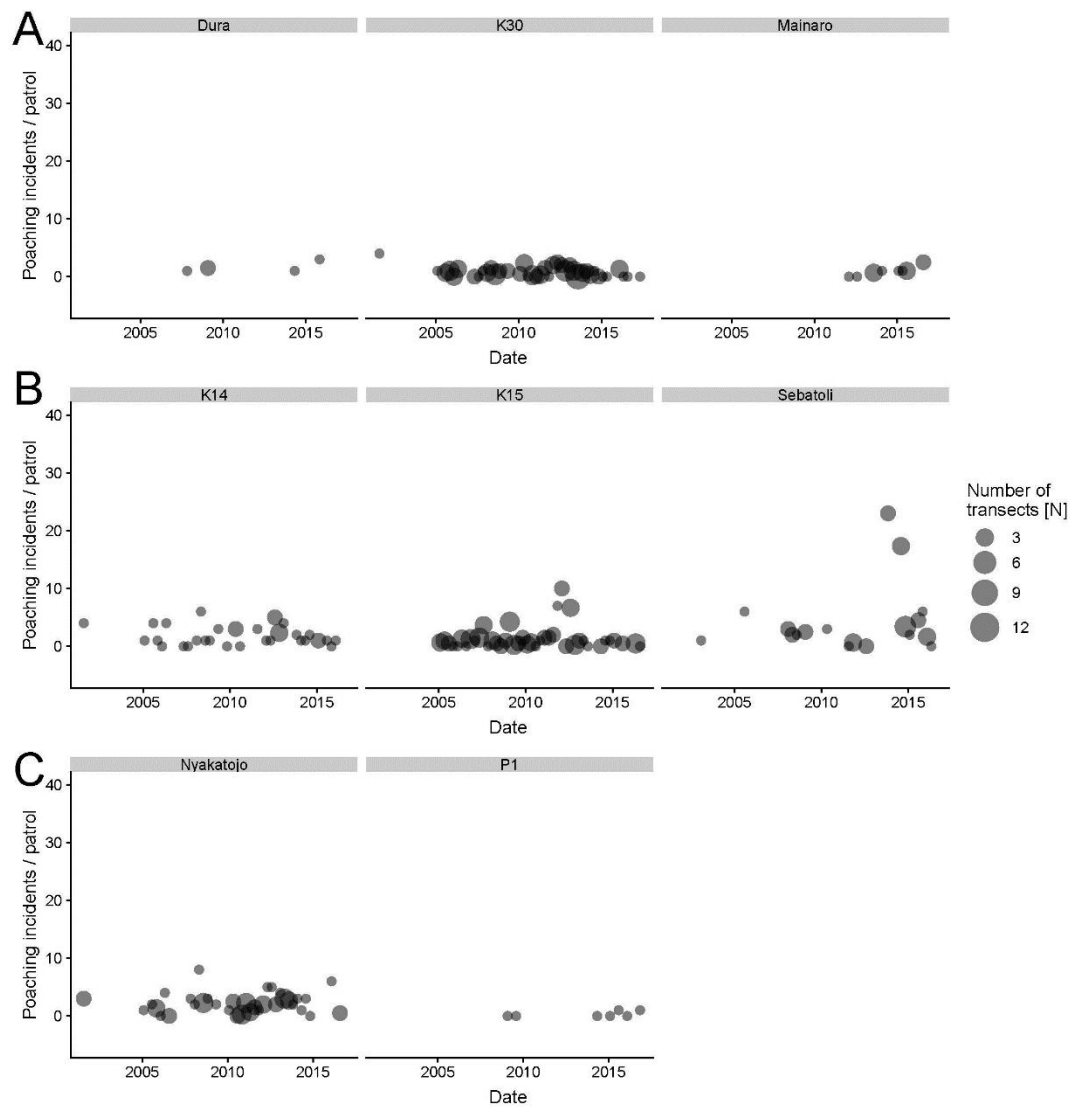


Supplementary Figure



Supplementary Figure S1. Number of ranger patrols from Uganda Wildlife Authority in which snares/traps were found per quarter (January-March, April-June, July-September, October- December) between March 2005 and December 2016 in eight sites with different histories of disturbance. **A)** Old-growth sites (not historically logged); **B)** Historically logged sites; and **C)** Forest regeneration sites (clear felling and active restoration). Size of circles is proportional to number of patrols conducted in that month.