

Supplementary Figures

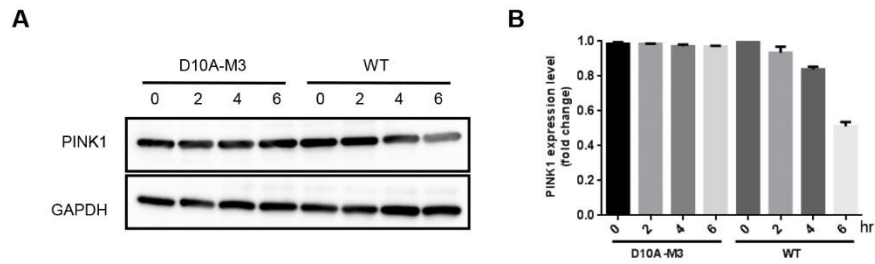
Supplementary Figure 1



Supplementary Figure S1. Off-target site analysis.

In total, 13 potential off-target sites were amplified and subjected to Sanger sequencing, with sequences shown. Off-target sgRNAs are labelled by red horizontal lines and red arrows point to mismatched bases. No off-targets were found in the 13 sites tested.

Supplementary Figure 2



Supplementary Figure S2. Stability assay of PINK1 protein.

(A) Western blotting assay of mutant and WT fibroblasts treated by CHX for 0/2/4/6 h.

(B) Relative PINK1 expression levels in (A) were calculated via ImageJ 1.8.0 software. Compared with WT, D10A-M3 fibroblasts did not change significantly under the same conditions.