

# 中国叶螨科二新种记述

(蜱螨目：叶螨科)

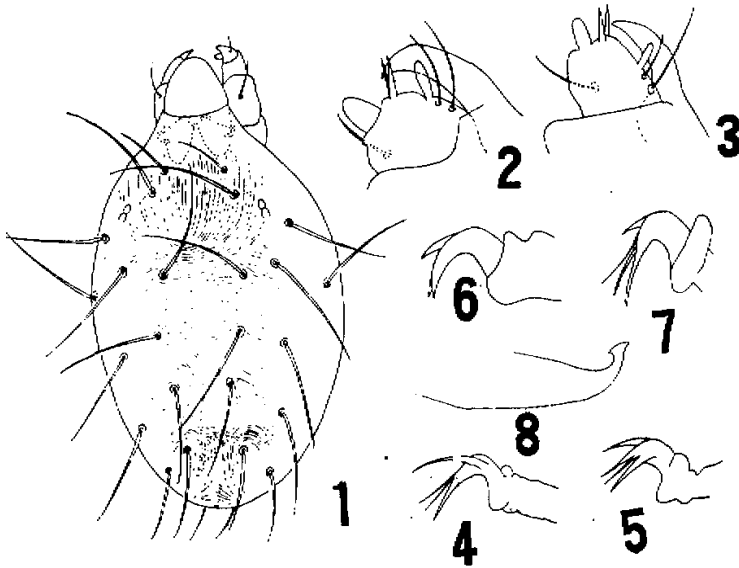
王慧芙 马恩沛

(中国科学院动物研究所) (上海农学院)

我们在整理和研究近年来采集到的叶螨科标本中，发现二个新种，隶属于叶螨属 *Tetranychus* 和始叶螨属 *Eotetranychus*。现记述如下。模式标本分别保存于中国科学院动物研究所和上海农学院。

竹叶螨 *Tetranychus bambusae* Wang et Ma, 新种 (图 1—8)

雌螨 体长(包括喙)446微米，宽266微米。躯体椭圆形，浅黄绿色，两侧各有二块大型黑斑。



本文于1981年1月2日收到。

须肢端感器柱形，粗短，长约为宽的1.5倍。背感器棒状，与端感器近于等长。气门沟呈U形弯曲。

背表皮纹在第3对背中毛之间和内鬃毛之间呈纵向，这些背毛之间的部位呈菱形纹。背毛长于横列间距。臀毛着生于躯体腹面。肛侧毛1对。生殖帷表皮纹在前部为纵向，后部为横向；生殖帷前区为纵向。

足I爪间突呈3对针状毛，第3对较前2对粗壮，其背面具一细爪状的背距，其长度为腹侧针状毛长的2/3；足II—IV爪间突与足I相似，但背距细而短，长度小于腹侧针状毛的1/2，呈典型的背刺毛状。各足节毛数如下：基节I—IV 2, 2, 1, 1；转节I—IV各1根；股节I—IV 10, 6, 4, 4；膝节I—IV 5, 5, 4, 4；胫节I—IV 10, 7, 6, 7；跗节I—IV 18 (17), 16, 10, 11。足I跗节二对双毛分离，双毛近基侧具4根触毛和1根感毛；足II跗节双毛的近基侧有2根触毛和1根感毛。

雄螨 体长(包括喙)333微米，宽147微米。

须肢端感器长大于宽，背感器与端感器长度略等。

足I爪间突呈粗爪状，背面具背距，其长度短于腹侧的爪。足II—IV爪间突裂为3对针状毛，其背面具背刺毛。各足节毛数除足I跗节具21或20根刚毛，胫节具13或12根刚毛，足II跗节具15或14根刚毛外，其它各足节毛数同雌螨。足I跗节双毛近基侧有5或4根触毛和3或2根感毛；足II跗节双毛近基侧有3或2根触毛和1根感毛。

阳具弯向背面，形成与柄部有一定角度的端锤，前突起圆钝，后突起尖锐。

正模♀，1974.V.8，广西(南宁)，王慧美采。配模♂，1977.VI.18，广东(广州)，马恩沛采。副模5♀♀1♂♂，同正模；7♀♀1♂♂，1974.VI.5.广东(海南岛)，王慧美采。4♀♀5♂♂7若螨，同配模。全部标本采于竹。

本新种雌螨足I爪间突有发达的背距，尖端微弯，呈爪状，腹面的第3对刺毛较前2对粗壮；足II—IV爪间突的背刺毛细而短，该特征易区别于本属的其它已知种。

南宁始叶螨 *Eotetranychus nanningensis* Ma et Wang, 新种(图9—14)

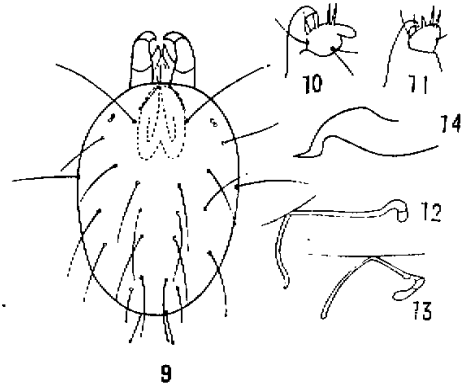
雌螨 体长(包括喙)368微米，宽207微米。椭圆形，淡黄色。

须肢端感器柱形，细长，其长度约为宽的2倍。背感器棒状，显著短于端感器。气门沟呈U形弯曲。

前足体中央背面表皮纹略纵行，后半体横向。背毛长于横列间距。生殖帷表皮纹横向，生殖帷前区为纵向。

爪间突分裂成3对刺毛。各足节毛数如下：基节I—IV 2, 2, 1, 1；转节I—IV各1根；股节I—IV 10, 7, 4, 4；膝节I—IV 5, 5, 4, 4；胫节I—

IV 10, 8, 6, 7；跗节I—IV 19, 16, 11, 11。足I跗节双毛近基侧具5根触毛和1根感毛；足II跗节双毛近基侧有4根触毛和1根感毛。足I胫节、足II和IV的跗节各有



感毛 1 根。

雄螨 体长 (包括喙) 289 微米, 宽 145 微米。

须肢端感器缺如, 背感器棒状。

足 I 爪间突增粗缩短, 有 1 根微刺。足 I—IV 的爪间突与雌螨相同。足 I 跗节双毛的近基侧有触毛 4 根和感毛 3 根, 胫节 I 有触毛 9 根和感毛 4 根, 其它各足节毛数同雌螨。

阳具柄部背缘的基部下凹, 中部隆起, 钩部弯向腹面, 转弯处增粗, 但不形成端锤。

正模♀, 配模♂和副模 3 ♀♀ 2 ♂♂ 2 若螨, 1975. II 9, 广西 (南宁), 马恩沛采。另一批副模 2 ♀♀ 1 ♂, 1974. IV. 20, 广东 (海南岛), 王慧英采。全部标本采自番石榴 *Psidium guajava*。

本新种与 *E. citus* Pritchard et Baker 相似, 背毛显著长于横列间距, 气门沟有端膝。但是本新种雌螨胫节 I 有刚毛 8 根, 雄螨端感器缺如, 阴茎构造均与后者有明显不同。

## TWO NEW SPECIES OF TETRANYCHIDAE FROM CHINA (ACARINA: TETRANYCHIDAE)

Wang Huifu

(Institute of Zoology, Academia Sinica)

Ma Enpei

(Shanghai Agricultural College)

This paper reports two new species of Tetranychidae from China, one of them belong to *Tetranychus* and the other *Eotetranychus*.

The type specimens are deposited in the Institute of Zoology, Academia Sinica and Shanghai Agricultural College.

*Tetranychus bambusae* Wang et Ma, sp. nov. (fig. 1—8)

Female length (including rostrum) 446 $\mu$ , width 266 $\mu$ . Yellowish-green in colour.

The length of palpus with terminal sensillum is 1.5 times as long as its width, dorsal sensillum as long as terminal one.

Hysterosoma with longitudinal striae between the third pairs of dorso-centrals and inner sacrals, a diamond-shaped figure is formed in the area. Flap with longitudinal striae on anterior part and transverse striae on posterior part,

Empodium I with the third pair of hairs stronger than the other two, bearing a claw-like mediodorsal spur, with its length  $2/3$  of that of empodium hairs. Empodium II-IV similar to empodium I, but mediodorsal spur smaller and thinner. Number of setae on legs as follows: coxa I-IV 2, 2, 1, 1; trochanter I-IV 1 for each; femur I-IV 10, 6, 4, 4; genu I-IV 5, 5, 4, 4; tibia I-IV 10, 7, 6, 7; tarsus I-IV 18(17), 16, 10, 11.

Male length (including rostrum) 333 $\mu$ , width 147 $\mu$ .

Palpus with terminal sensillum longer than its breadth; dorsal sensillum about as long as the terminal one.

Empodium I clawlike, bearing mediodorsal spur and shorter than proximoventral claw, Empodium II-IV consisting of three pairs of hair and tiny mediodorsal spur.

Aedeagus bending dorsad and forming a knob, its anterior angulation blunt and posterior angulation sharp.

Holotype ♀, V.8. 1974, Guangxi (Nanning) (by Wang). Allotype ♂, II. 18. 1977, Guangdong (Guangzhou) (by Ma). Paratypes 5♀♀ 1♂, same as for holotype; 7♀♀ 1♂, IV. 5. 1974, Guangdong (Hainan Island), (by Wang); 4♀♀ 5♂♂ 7 nymphs, same as for allotype. All specimens collected on bambusa.

This new species differs from all the other known species of this genus in empodium I with developed mediodorsal spur, clawlike and curved; the third pair of empodium hairs stronger than the other two; empodium II-IV with spur shorter and tinier.

*Eotetranychus nanningensis* Ma et Wang, sp. nov. (figs 9-14)

Female length (including rostrum) 368 $\mu$ , width 207 $\mu$ ,

Pale yellow in colour.

The length of palpus with terminal sensillum is 2 times as long as its width; dorsal sensillum shorter than the terminal one.

Genital flap with transverse striae; area immediately anterior to genital flap with longitudinal striae.

Number of setae on legs as follows: coxa I-IV 2, 2, 1, 1; trochanter I-IV 1 for each; femur I-IV 10, 7, 4, 4; genu I-IV 5, 5, 4, 4; tibia I-IV 10, 8, 6, 7; tarsus I-IV 19, 16, 11, 11.

Male length (including rostrum) 289 $\mu$ , width 145 $\mu$ .

Palpus without terminal sensillum; dorsal sensillum clavate-like.

Aedeagus curved ventrad and without knob, dorsal margin of the shaft forming a notch near its base and swollen caudally.

Holotype ♀, allotype ♂ and paratypes 3♀♀ 2♂♂ 2 nymphs, II. 9. 1975,

Guangxi, on *Psidium guajava* (by Ma). A series of paratypes 2♀ 1♂, IV. 20. 1974, Guangdong (Hainan Island), the same host as that of holotype. This new species is similar to *E. clitus* Pritchard et Baker in dorsal setae being longer than the distance between them and in the shape of peritreme but differs from the latter in tibia II of female with 8 setae; palpus of male without terminal sensillum and also in the shape of aedeagus.

### 图 例 说 明

图 1—8 竹叶螨 *Tetranychus bambusae* Wang et Ma, 新种

1. 雌螨背面; 2. 雌螨须肢跗节; 3. 雄螨须肢跗节; 4. 雌螨足 I 跗节端部; 5. 雌螨足 II 跗节端部; 6. 雄螨足 I 跗节端部; 7. 雄螨足 II 跗节端部; 8. 阳具

图 9—14 南宁始叶螨 *Eotetranychus nanningensis* Ma et Wang, 新种

9. 雌螨背面; 10. 雌螨须肢跗节; 11. 雄螨须肢跗节; 12, 13. 气门沟; 14. 阳具